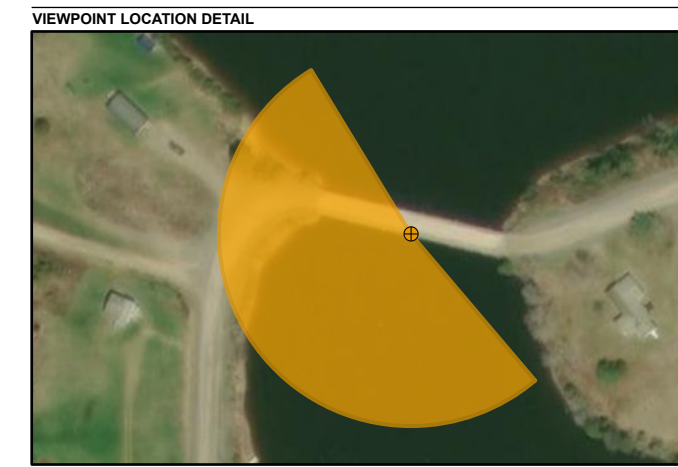
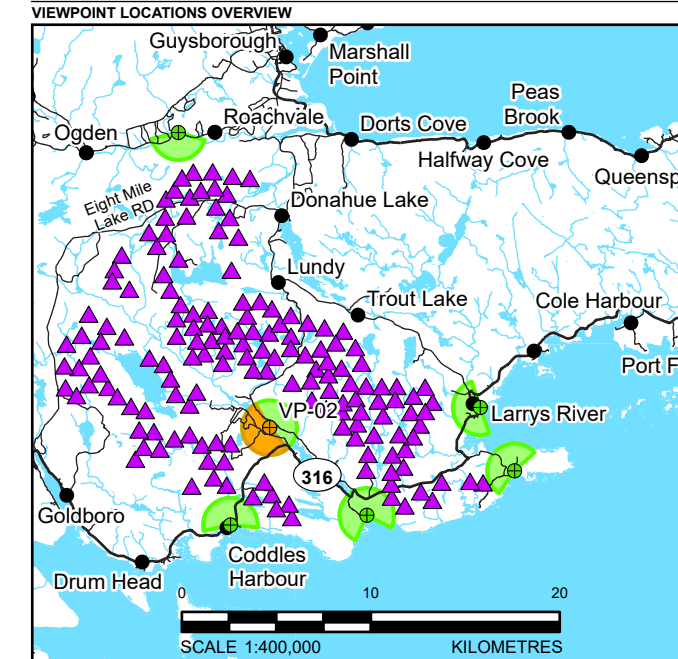


VIEWPOINT SIMULATION



BASELINE PHOTO



LEGEND

—	HIGHWAY	●	CURRENT VIEWPOINT
—	LOCAL ROAD	●	VIEWPOINT
▲	TURBINE LOCATION	■	CURRENT VIEWPOINT FIELD OF VIEW
		■	OTHER VIEWPOINT FIELD OF VIEW

VIEWPOINT INFORMATION

VIEWPOINT NUMBER:	VP-04 SW	WEATHER:	REPRESENTED AS BLUE SKY
EASTING:	616615 m	DIRECTION:	SOUTHWEST
NORTHING:	5007684 m	FOCAL LENGTH:	50mm
ELEVATION:	3 m	FIELD OF VIEW:	~190°
DATE:	3 MARCH 2026	CAMERA HEIGHT ABOVE GROUND:	1.7m

NOTES AND REFERENCES
 SOME TURBINES MIGHT BE (PARTIALLY) OBSCURED BY VEGETATION IN CLOSE PROXIMITY TO THE VIEWPOINT. TURBINES SHOWN ARE A REPRESENTATION OF THE GOLDWIND 182-8.0 MW. HUB HEIGHT: 130 M ROTOR DIAMETER: 183.4 M TIP HEIGHT: 221.7 M
 DIGITAL BASE DATA OBTAINED FROM GEOGRATIS. © DEPARTMENT OF NATURAL RESOURCES CANADA. ALL RIGHTS RESERVED
 DATUM: NAD83 PROJECTION: UTM ZONE 20

CLIENT
 EVERWIND
 PROJECT
 WIND FARM 2

TITLE
VISUAL SIMULATION VIEWPOINT 02B - NEW HARBOUR - WEST ROAD (SOUTHWEST VIEW)

CONSULTANT	YYYY-MM-DD	2026-03-30
DESIGNED	PT	
PREPARED	PT	
REVIEWED	NLH	
APPROVED	KG	

PROJECT NO.	CONTROL	REV.	FIGURE
CA0066766.3659	3000	0	2B

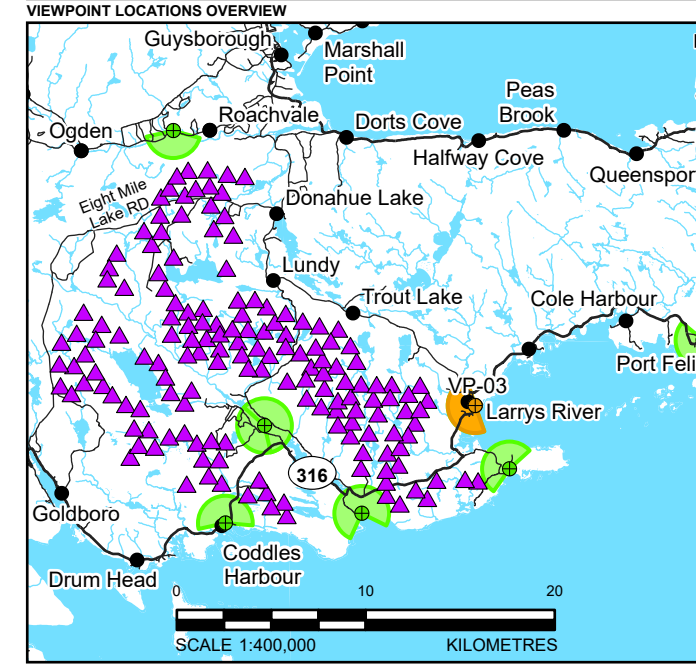
PATH: I:\PROJECTS\EVERWIND\CA0066766_3659\FIG2\VP02B\NewHarbour-WestRoad_SouthWest_VP02B_02B.dwg, PLOT: VP02B\NewHarbour-WestRoad_SouthWest_VP02B_02B.dwg, PRINTED ON: 03/03/2026 10:03:34 AM

IF THIS REQUIREMENT DOES NOT MATCH WHAT IS SHOWN, THE SHEET DESIGN AND REVISIONS ARE BEING DEVELOPED FROM THIS SHEET.

VIEWPOINT SIMULATION



BASELINE PHOTO



LEGEND

—	HIGHWAY	●	CURRENT VIEWPOINT
—	LOCAL ROAD	●	VIEWPOINT
▲	TURBINE LOCATION	■	CURRENT VIEWPOINT FIELD OF VIEW
		■	OTHER VIEWPOINT FIELD OF VIEW

VIEWPOINT INFORMATION

VIEWPOINT NUMBER:	VP-05	WEATHER:	REPRESENTED AS BLUE SKY
EASTING:	627759 m	DIRECTION:	SOUTHWEST
NORTHING:	5008742 m	FOCAL LENGTH:	50mm
ELEVATION:	5 m	FIELD OF VIEW:	~185°
DATE:	3 MARCH 2026	CAMERA HEIGHT ABOVE GROUND:	1.7m

NOTES AND REFERENCES

SOME TURBINES MIGHT BE (PARTIALLY) OBTSCURED BY VEGETATION IN CLOSE PROXIMITY TO THE VIEWPOINT. TURBINES SHOWN ARE A REPRESENTATION OF THE GOLDWIND 182-8.0 MW. HUB HEIGHT: 130 M ROTOR DIAMETER: 163.4 M TIP HEIGHT: 221.7 M

DIGITAL BASE DATA OBTAINED FROM GEOGRATIS, © DEPARTMENT OF NATURAL RESOURCES CANADA. ALL RIGHTS RESERVED

DATUM: NAD83 PROJECTION: UTM ZONE 20

CLIENT
EVERWIND

PROJECT
WIND FARM 2

TITLE
VISUAL SIMULATION VIEWPOINT 03 - LARRY'S RIVER - EAST SIDE ROAD

CONSULTANT

DATE	2026-03-30
DESIGNED	PT
PREPARED	PT
REVIEWED	NLH
APPROVED	KG

PROJECT NO.	CONTROL	REV.	FIGURE
CA0066766.3659	3000	0	3

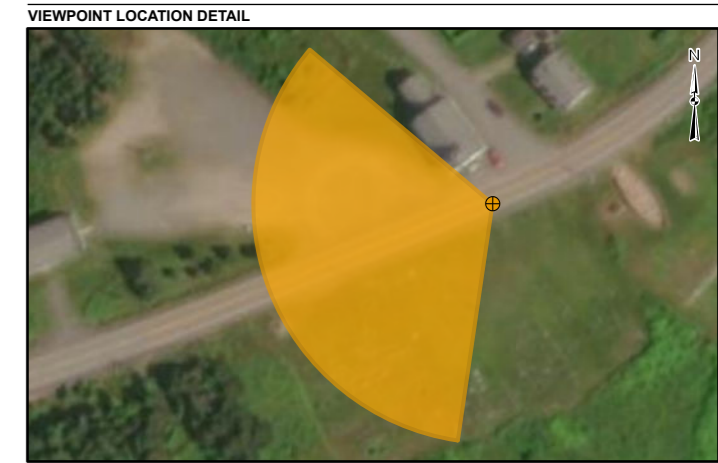
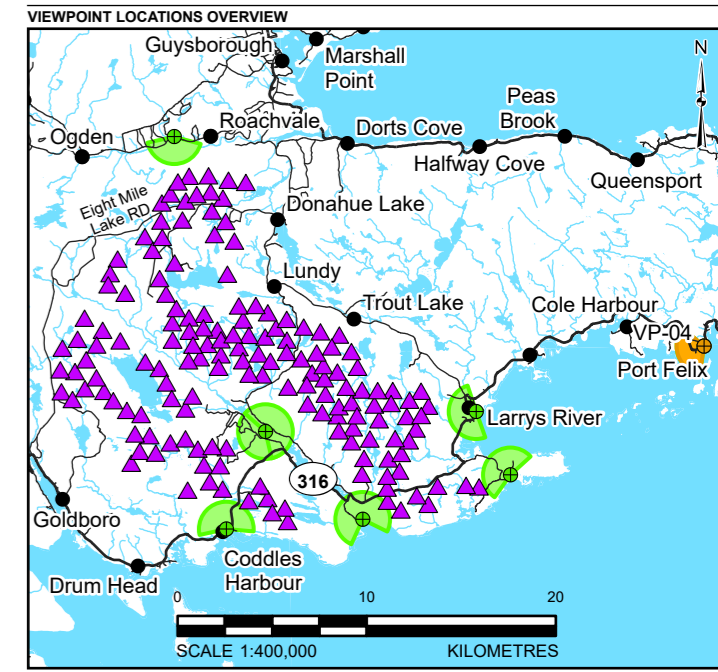
THIS REPRESENTATION DOES NOT WARRANT OR GUARANTEE TO SHOW THE SHEET SIZE HAS BEEN REPRODUCED FROM THE ORIGINAL DRAWING.

PATH: I:\CLIENTS\EVERWIND\CA0066766_3659_VP03\MapInfo\MapInfo\CA0066766_3659_VP03_LarrysRiver-EastSideRoad.dwg PRINTED ON: 4/22/23 PM

VIEWPOINT SIMULATION



BASELINE PHOTO



LEGEND

— HIGHWAY	● CURRENT VIEWPOINT
— LOCAL ROAD	● VIEWPOINT
▲ TURBINE LOCATION	● CURRENT VIEWPOINT FIELD OF VIEW
	● OTHER VIEWPOINT FIELD OF VIEW

VIEWPOINT INFORMATION

VIEWPOINT NUMBER:	VP-06	WEATHER:	OVERCAST
EASTING:	639815 m	DIRECTION:	SOUTHWEST
NORTHING:	5012205 m	FOCAL LENGTH:	50mm
ELEVATION:	33 m	FIELD OF VIEW:	~120°
DATE:	3 MARCH 2026	CAMERA HEIGHT ABOVE GROUND:	1.7m

NOTES AND REFERENCES
 SOME TURBINES MIGHT BE (PARTIALLY) OBSCURED BY VEGETATION IN CLOSE PROXIMITY TO THE VIEWPOINT. TURBINES SHOWN ARE A REPRESENTATION OF THE GOLDWIND 182-8.0 MW. HUB HEIGHT: 130 M ROTOR DIAMETER: 183.4 M TIP HEIGHT: 221.7 M
 DIGITAL BASE DATA OBTAINED FROM GEOGRATIS, © DEPARTMENT OF NATURAL RESOURCES CANADA. ALL RIGHTS RESERVED
 DATUM: NAD83 PROJECTION: UTM ZONE 20

CLIENT
EVERWIND
 PROJECT
WIND FARM 2

TITLE
VISUAL SIMULATION VIEWPOINT 04 - PORT FELIX

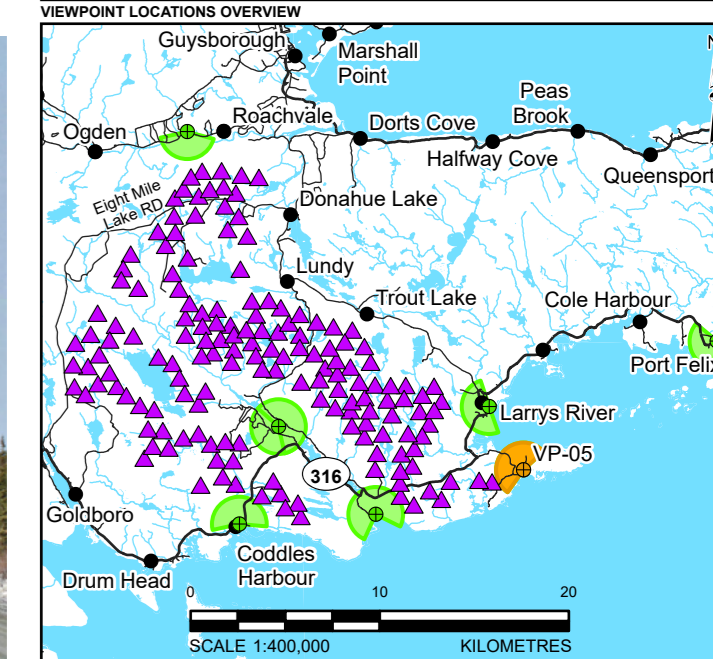
CONSULTANT	YYYY-MM-DD	2026-03-31
	DESIGNED	PT
	PREPARED	PT
	REVIEWED	NLH
	APPROVED	KG

PROJECT NO.	CONTROL	REV.	FIGURE
CA0066766.3659	3000	0	4

VIEWPOINT SIMULATION



BASELINE PHOTO



LEGEND

—	HIGHWAY	●	CURRENT VIEWPOINT
—	LOCAL ROAD	○	VIEWPOINT
▲	TURBINE LOCATION	■	CURRENT VIEWPOINT FIELD OF VIEW
		■	OTHER VIEWPOINT FIELD OF VIEW

VIEWPOINT INFORMATION

VIEWPOINT NUMBER:	VP-07	WEATHER:	REPRESENTED AS BLUE SKY
EASTING:	629575 m	DIRECTION:	NORTHWEST
NORTHING:	5005393 m	FOCAL LENGTH:	50mm
ELEVATION:	2 m	FIELD OF VIEW:	~190°
DATE:	3 MARCH 2026	CAMERA HEIGHT ABOVE GROUND:	1.7m

NOTES AND REFERENCES
 SOME TURBINES MIGHT BE (PARTIALLY) OBSERVED BY VEGETATION IN CLOSE PROXIMITY TO THE VIEWPOINT. TURBINES SHOWN ARE A REPRESENTATION OF THE GOLDWIND 162-8.0 MW, HUB HEIGHT: 130 M ROTOR DIAMETER: 183.4 M TIP HEIGHT: 221.7 M
 DIGITAL BASE DATA OBTAINED FROM GEOGRATIS, © DEPARTMENT OF NATURAL RESOURCES CANADA. ALL RIGHTS RESERVED.
 DATUM: NAD83 PROJECTION: UTM ZONE 20

CLIENT
EVERWIND
 PROJECT
WIND FARM 2

TITLE
VISUAL SIMULATION VIEWPOINT 05 - TOR BAY - BEACH ROAD

CONSULTANT

YYYY-MM-DD	2026-03-30
DESIGNED	PT
PREPARED	PT
REVIEWED	NLH
APPROVED	KG

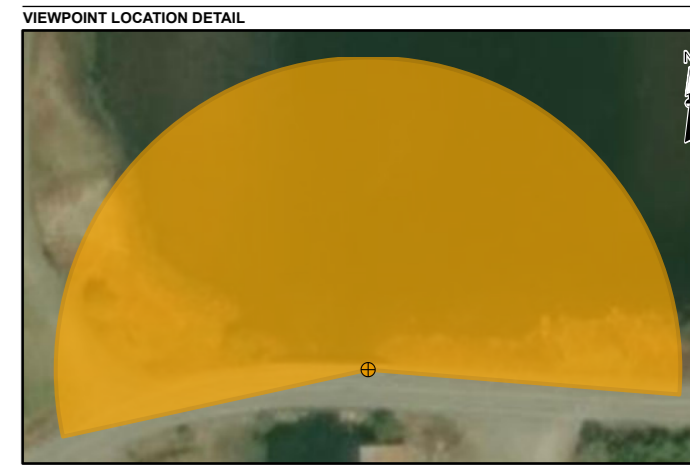
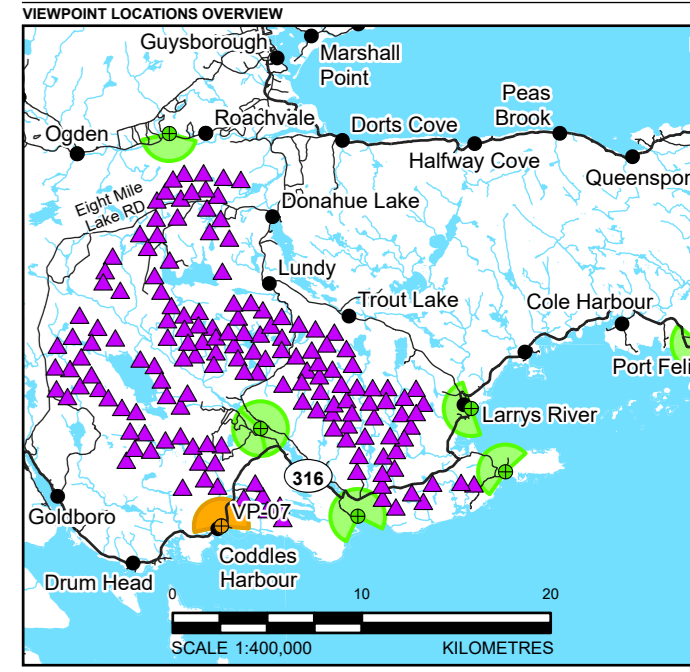
PRINT: I:\CLIENTS\EVERWIND\CA0066766_3659_W22\MapInfo\Visual\CA0066766_3659_VP05_TorBayBeachRoad.mxd, PRINTED ON: AT 3:42:27 PM

Zoom: If this measurement does not match what is shown, the sheet scale is being used to determine the measurement.

VIEWPOINT SIMULATION



BASELINE PHOTO



LEGEND

— HIGHWAY	● CURRENT VIEWPOINT
— LOCAL ROAD	● VIEWPOINT
▲ TURBINE LOCATION	● CURRENT VIEWPOINT FIELD OF VIEW
	■ OTHER VIEWPOINT FIELD OF VIEW

VIEWPOINT INFORMATION

VIEWPOINT NUMBER:	VP-09	WEATHER:	REPRESENTED AS BLUE SKY
EASTING:	614544 m	DIRECTION:	NORTH
NORTHING:	5002526 m	FOCAL LENGTH:	50mm
ELEVATION:	4 m	FIELD OF VIEW:	~195°
DATE:	3 MARCH 2026	CAMERA HEIGHT ABOVE GROUND:	1.7m

NOTES AND REFERENCES
 SOME TURBINES MIGHT BE (PARTIALLY) OBTSCURED BY VEGETATION IN CLOSE PROXIMITY TO THE VIEWPOINT. TURBINES SHOWN ARE A REPRESENTATION OF THE GOLDWIND 182-8 MW. HUB HEIGHT: 130 M ROTOR DIAMETER: 163.4 M TIP HEIGHT: 221.7 M
 DIGITAL BASE DATA OBTAINED FROM GEOGRATIS, © DEPARTMENT OF NATURAL RESOURCES CANADA. ALL RIGHTS RESERVED
 DATUM: NAD83 PROJECTION: UTM ZONE 20

CLIENT
 EVERWIND
 PROJECT
 WIND FARM 2

TITLE
VISUAL SIMULATION VIEWPOINT 07 - CODDLES HARBOUR

CONSULTANT	YYYY-MM-DD	2026-03-30	
	DESIGNED	PT	
	PREPARED	PT	
	REVIEWED	NLH	
	APPROVED	KG	
PROJECT NO.	CONTROL	REV.	FIGURE
CA0066766.3659	3000	0	7

D:\PROJECTS\EVERWIND\CA0066766_3659_WINDFARM\Drawings\03000_VP07_CoddlesHarbour.dwg PRINTED ON: 03/31/26 10:05 AM