

VIEWPOINT SIMULATION

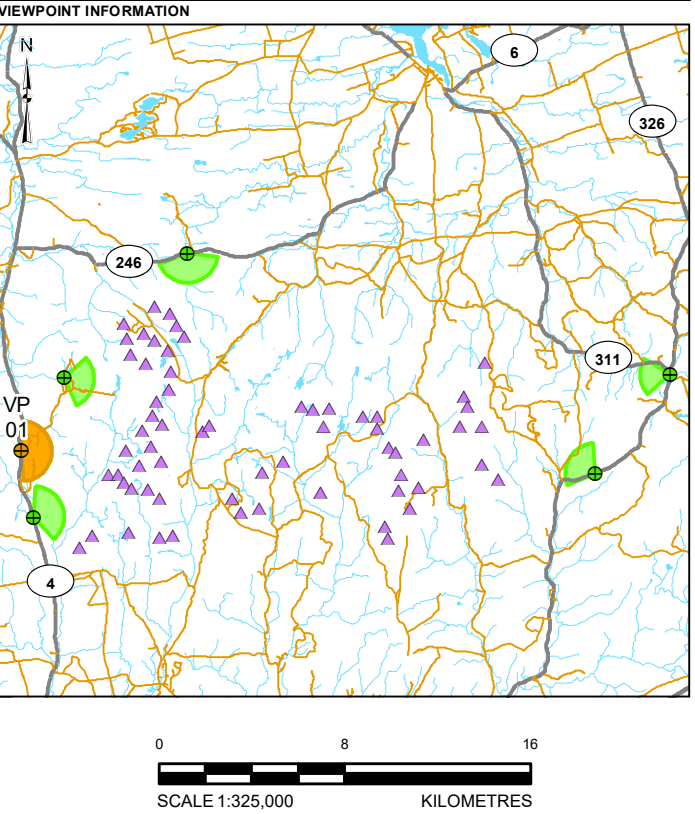


BASELINE PHOTO



NOTE
SOME TURBINES MIGHT BE (PARTIALLY) OBSCURED BY VEGETATION IN CLOSE PROXIMITY TO THE VIEWPOINT.

TURBINES SHOWN ARE A REPRESENTATION OF THE GOLDWIND 182-8.0 MW.
HUB HEIGHT: 120 M
ROTOR DIAMETER: 183.4 M
TIP HEIGHT: 211.7 M



LEGEND	
	TURBINE LOCATION
	CURRENT VIEWPOINT
	VIEWPOINT
	CURRENT VIEWPOINT FIELD OF VIEW
	OTHER VIEWPOINT FIELD OF VIEW
	HIGHWAY
	LOCAL ROAD
	WATERCOURSE
	WATERBODY

VIEWPOINT INFORMATION	
VIEWPOINT NUMBER:	VP-01
EASTING:	457082 m
NORTHING:	5043280 m
ELEVATION:	191 m
DATE:	18 DECEMBER 2023
WEATHER CONDITIONS:	OVERCAST (BLUE SKY DEPICTED)
DIRECTION:	EAST
FOCAL LENGTH:	50 mm
FIELD OF VIEW:	~170°
HEIGHT OF CAMERA ABOVE GROUND:	1.7 m

REFERENCES
DIGITAL BASE DATA OBTAINED FROM GEOGRATIS, © DEPARTMENT OF NATURAL RESOURCES CANADA. ALL RIGHTS RESERVED
DATUM: NAD83 PROJECTION: UTM ZONE 20

CLIENT
EVERWIND FUELS (EWF)

PROJECT
WINDY RIDGE & KMTNUK WIND PROJECTS

TITLE
VISUAL SIMULATION VIEWPOINT 01 - FOLLY LAKE HIGHWAY 4 - REVISED LAYOUT (2025)

CONSULTANT	YYYY-MM-DD	2025-05-23
	DESIGNED	PT
	PREPARED	BS
	REVIEWED	NLH
	APPROVED	KG

PROJECT NO.	CONTROL	REV.	FIGURE
CA0054245.2400	100	0	1A

VIEWPOINT SIMULATION



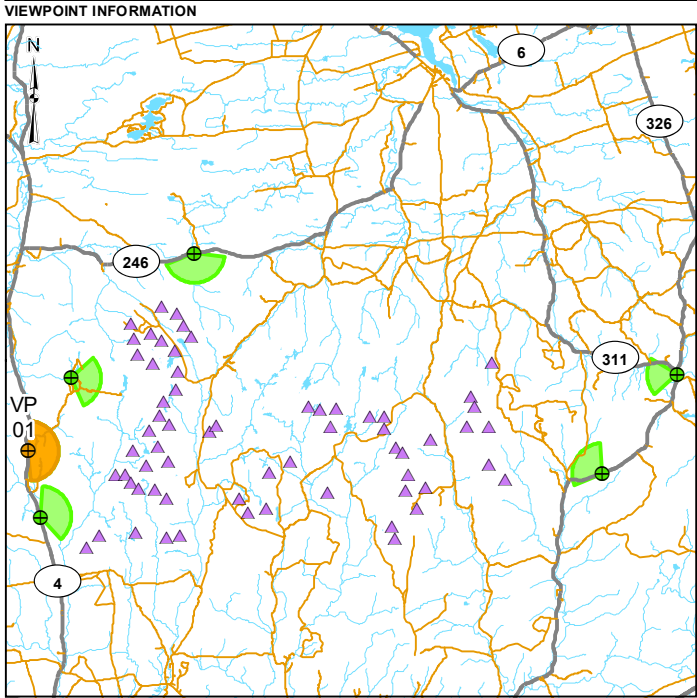
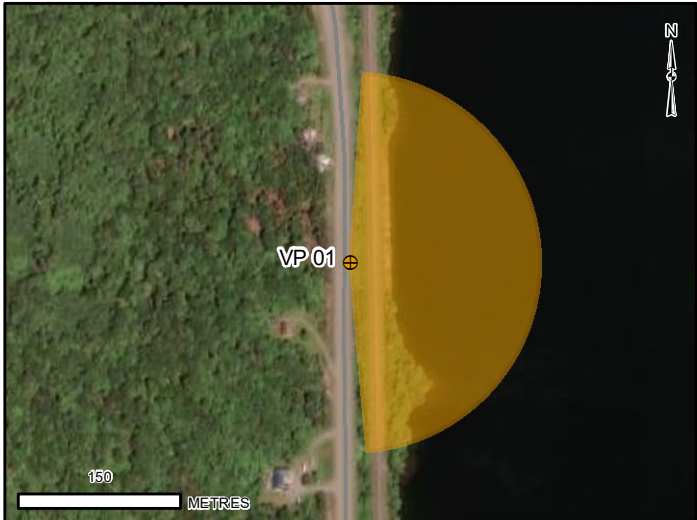
BASELINE PHOTO



NOTE
SOME TURBINES MIGHT BE (PARTIALLY) OBSCURED BY VEGETATION IN CLOSE PROXIMITY TO THE VIEWPOINT.

TURBINES SHOWN ARE A REPRESENTATION OF THE GOLDWIND 182-8.0 MW.
HUB HEIGHT: 120 M
ROTOR DIAMETER: 183.4 M
TIP HEIGHT: 211.7 M

VIEWPOINT LOCATION DETAIL



LEGEND	
	TURBINE LOCATION
	CURRENT VIEWPOINT
	VIEWPOINT
	CURRENT VIEWPOINT FIELD OF VIEW
	OTHER VIEWPOINT FIELD OF VIEW
	HIGHWAY
	LOCAL ROAD
	WATERCOURSE
	WATERBODY

VIEWPOINT INFORMATION	
VIEWPOINT NUMBER:	VP-01
EASTING:	457082 m
NORTHING:	5043280 m
ELEVATION:	191 m
DATE:	18 DECEMBER 2023
WEATHER CONDITIONS:	OVERCAST
DIRECTION:	EAST
FOCAL LENGTH:	50 mm
FIELD OF VIEW:	~170°
HEIGHT OF CAMERA ABOVE GROUND:	1.7 m

REFERENCES
DIGITAL BASE DATA OBTAINED FROM GEOGRATIS, © DEPARTMENT OF NATURAL RESOURCES CANADA. ALL RIGHTS RESERVED
DATUM: NAD83 PROJECTION: UTM ZONE 20

CLIENT
EVERWIND FUELS (EWF)

PROJECT
WINDY RIDGE & KMTNUK WIND PROJECTS

TITLE
VISUAL SIMULATION VIEWPOINT 01 - FOLLY LAKE HIGHWAY 4 -
REVISED LAYOUT (2025)

CONSULTANT		YYYY-MM-DD	2025-05-23
	DESIGNED	PT	
	PREPARED	BS	
	REVIEWED	NLH	
	APPROVED	KG	

PROJECT NO.	CONTROL	REV.	FIGURE
CA0054245.2400	100	0	1B

VIEWPOINT SIMULATION



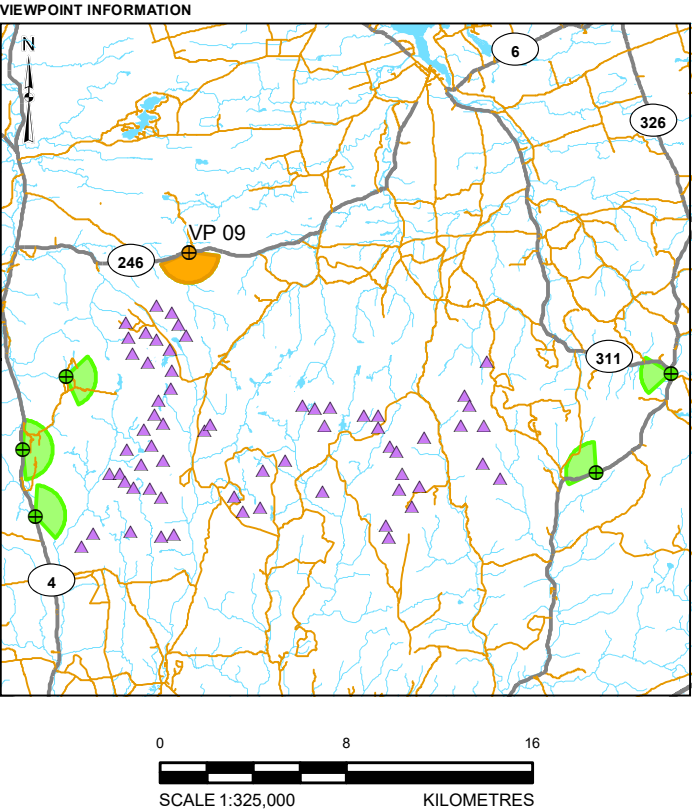
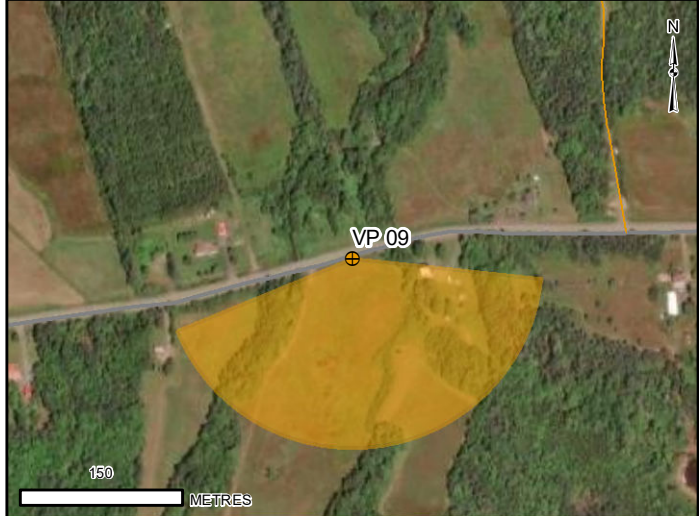
BASELINE PHOTO



NOTE
SOME TURBINES MIGHT BE (PARTIALLY) OBSCURED BY VEGETATION IN CLOSE PROXIMITY TO THE VIEWPOINT.

TURBINES SHOWN ARE A REPRESENTATION OF THE GOLDWIND 182-8.0 MW.
HUB HEIGHT: 120 M
ROTOR DIAMETER: 183.4 M
TIP HEIGHT: 211.7 M

VIEWPOINT LOCATION DETAIL



- LEGEND**
- TURBINE LOCATION
 - CURRENT VIEWPOINT
 - VIEWPOINT
 - CURRENT VIEWPOINT FIELD OF VIEW
 - OTHER VIEWPOINT FIELD OF VIEW
 - HIGHWAY
 - LOCAL ROAD
 - WATERCOURSE
 - WATERBODY

VIEWPOINT INFORMATION

VIEWPOINT NUMBER: VP-09
EASTING: 465337 m
NORTHING: 5053095 m
ELEVATION: 108 m
DATE: 15 DECEMBER 2023
WEATHER CONDITIONS: CLOUDY (BLUE SKY DEPICTED)
DIRECTION: SOUTH
FOCAL LENGTH: 50 mm
FIELD OF VIEW: ~150°
HEIGHT OF CAMERA ABOVE GROUND: 1.7 m

REFERENCES
DIGITAL BASE DATA OBTAINED FROM GEOGRATIS, © DEPARTMENT OF NATURAL RESOURCES CANADA. ALL RIGHTS RESERVED
DATUM: NAD83 PROJECTION: UTM ZONE 20

CLIENT
EVERWIND FUELS (EWF)

PROJECT
WINDY RIDGE & KMTNUK WIND PROJECTS

TITLE
VISUAL SIMULATION VIEWPOINT 09 - HIGHWAY 246-3 - REVISED LAYOUT (2025)

CONSULTANT	YYYY-MM-DD	2025-05-23
DESIGNED	PT	
PREPARED	BS	
REVIEWED	NLH	
APPROVED	KG	

PROJECT NO. CA0054245.2400 CONTROL 100 REV. 0 FIGURE 9A

VIEWPOINT SIMULATION



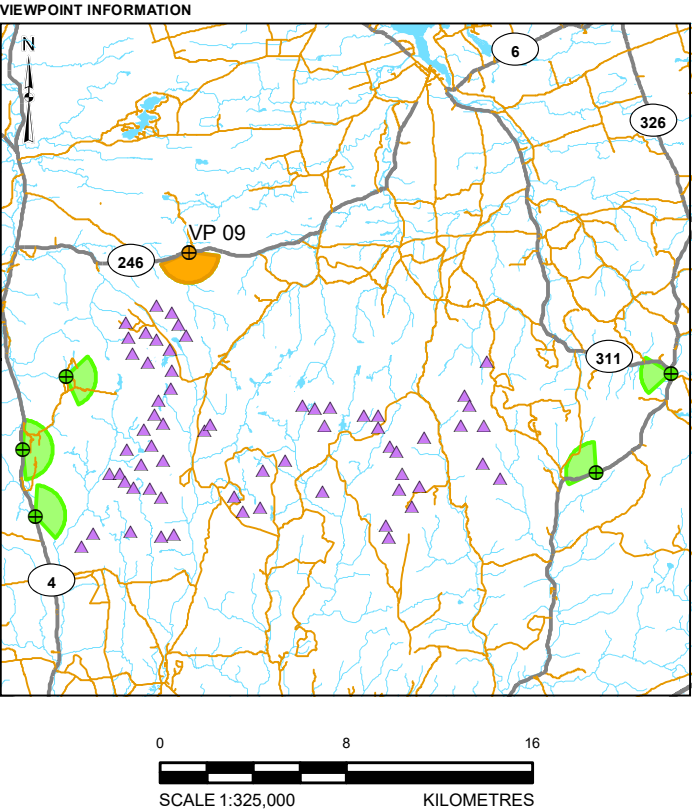
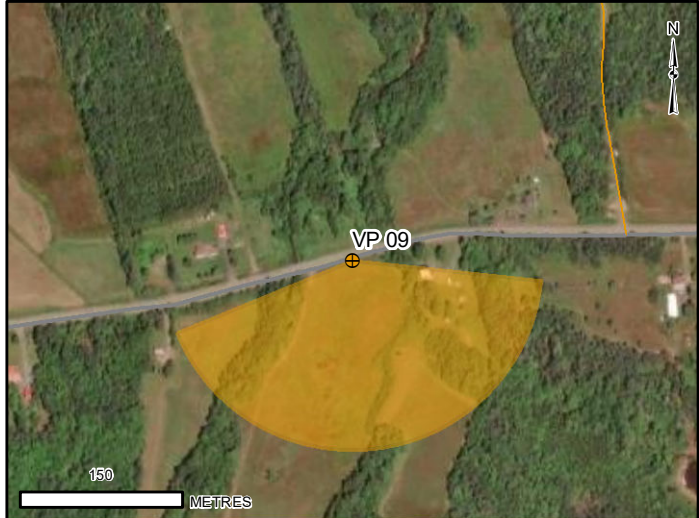
BASELINE PHOTO



NOTE
SOME TURBINES MIGHT BE (PARTIALLY) OBSCURED BY VEGETATION IN CLOSE PROXIMITY TO THE VIEWPOINT.

TURBINES SHOWN ARE A REPRESENTATION OF THE GOLDWIND 182-8.0 MW.
HUB HEIGHT: 120 M
ROTOR DIAMETER: 183.4 M
TIP HEIGHT: 211.7 M

VIEWPOINT LOCATION DETAIL



- LEGEND**
- | | | | |
|--|---------------------------------|--|-------------|
| | TURBINE LOCATION | | HIGHWAY |
| | CURRENT VIEWPOINT | | LOCAL ROAD |
| | VIEWPOINT | | WATERCOURSE |
| | CURRENT VIEWPOINT FIELD OF VIEW | | WATERBODY |
| | OTHER VIEWPOINT FIELD OF VIEW | | |

VIEWPOINT INFORMATION

VIEWPOINT NUMBER:	VP-09
EASTING:	465337 m
NORTHING:	5053095 m
ELEVATION:	108 m
DATE:	15 DECEMBER 2023
WEATHER CONDITIONS:	CLOUDY
DIRECTION:	SOUTH
FOCAL LENGTH:	50 mm
FIELD OF VIEW:	~150°
HEIGHT OF CAMERA ABOVE GROUND:	1.7 m

REFERENCES
DIGITAL BASE DATA OBTAINED FROM GEOGRATIS, © DEPARTMENT OF NATURAL RESOURCES CANADA. ALL RIGHTS RESERVED
DATUM: NAD83 PROJECTION: UTM ZONE 20

CLIENT
EVERWIND FUELS (EWF)

PROJECT
WINDY RIDGE & KMTNUK WIND PROJECTS

TITLE
VISUAL SIMULATION VIEWPOINT 09 - HIGHWAY 246-3 - REVISED LAYOUT (2025)

CONSULTANT	YYYY-MM-DD	2025-05-23
DESIGNED	PT	
PREPARED	BS	
REVIEWED	NLH	
APPROVED	KG	

PROJECT NO.	CONTROL	REV.	FIGURE
CA0054245.2400	100	0	9B

VIEWPOINT SIMULATION



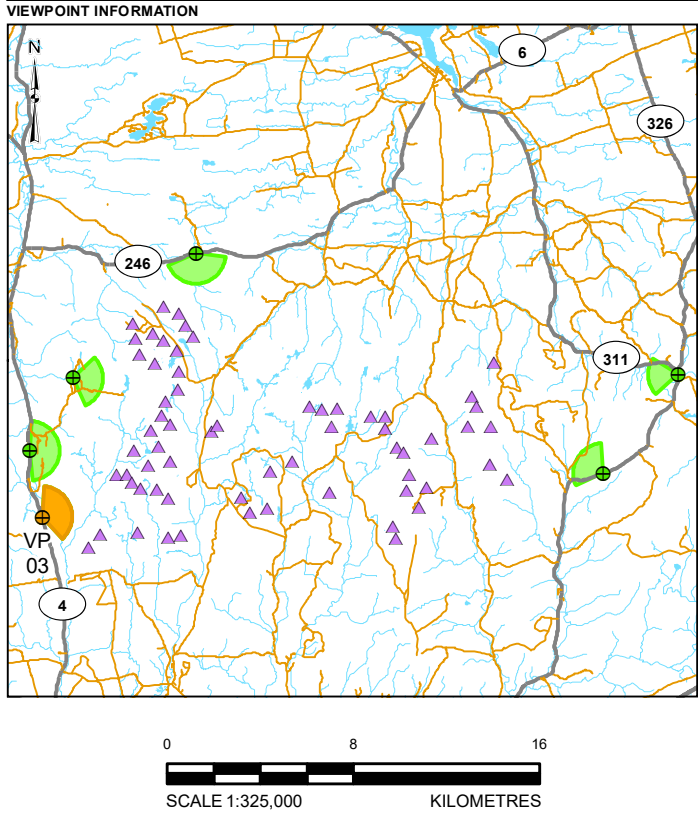
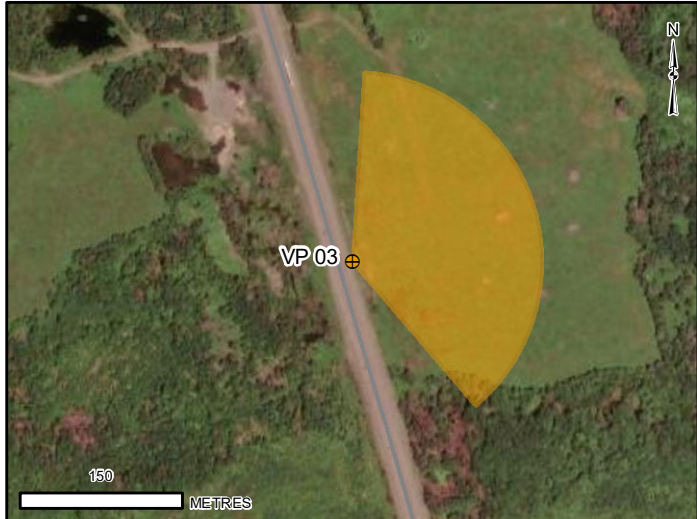
BASELINE PHOTO



NOTE
SOME TURBINES MIGHT BE (PARTIALLY) OBSCURED BY VEGETATION IN CLOSE PROXIMITY TO THE VIEWPOINT.

TURBINES SHOWN ARE A REPRESENTATION OF THE GOLDWIND 182-8.0 MW.
HUB HEIGHT: 120 M
ROTOR DIAMETER: 183.4 M
TIP HEIGHT: 211.7 M

VIEWPOINT LOCATION DETAIL



LEGEND	
	TURBINE LOCATION
	CURRENT VIEWPOINT
	VIEWPOINT
	CURRENT VIEWPOINT FIELD OF VIEW
	OTHER VIEWPOINT FIELD OF VIEW
	HIGHWAY
	LOCAL ROAD
	WATERCOURSE
	WATERBODY

VIEWPOINT INFORMATION	
VIEWPOINT NUMBER:	VP-03
EASTING:	457703 m
NORTHING:	5039996 m
ELEVATION:	229 m
DATE:	18 DECEMBER 2023
WEATHER CONDITIONS:	OVERCAST (BLUE SKY DEPICTED)
DIRECTION:	EAST
FOCAL LENGTH:	50 mm
FIELD OF VIEW:	~135°
HEIGHT OF CAMERA ABOVE GROUND:	1.7 m

REFERENCES
DIGITAL BASE DATA OBTAINED FROM GEOGRATIS, © DEPARTMENT OF NATURAL RESOURCES CANADA. ALL RIGHTS RESERVED
DATUM: NAD83 PROJECTION: UTM ZONE 20

CLIENT
EVERWIND FUELS (EWF)

PROJECT
WINDY RIDGE & KMTNUK WIND PROJECTS

TITLE
VISUAL SIMULATION VIEWPOINT 03 - FOLLY MOUNTAIN - REVISED LAYOUT (2025)

	CONSULTANT	YYYY-MM-DD	2025-05-23
	DESIGNED	PT	
	PREPARED	BS	
	REVIEWED	NLH	
	APPROVED	KG	

PROJECT NO.	CONTROL	REV.	FIGURE
CA0054245.2400	100	0	3A

VIEWPOINT SIMULATION



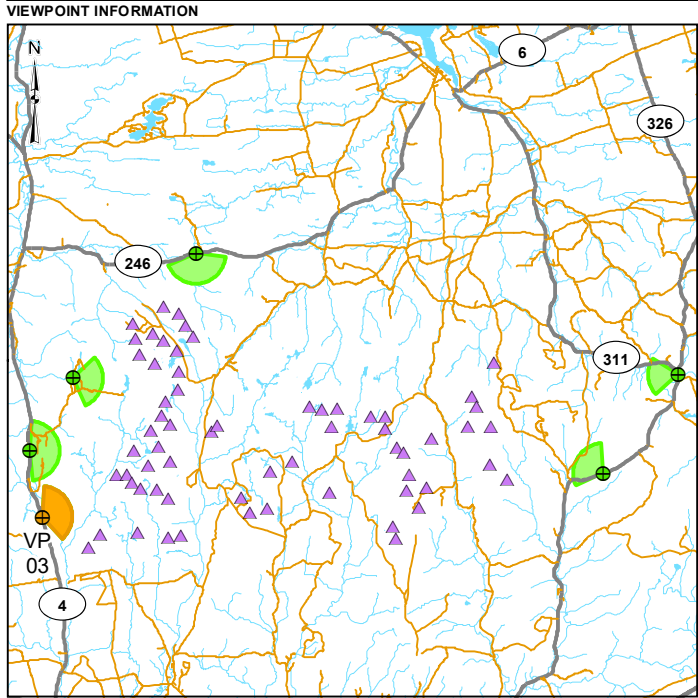
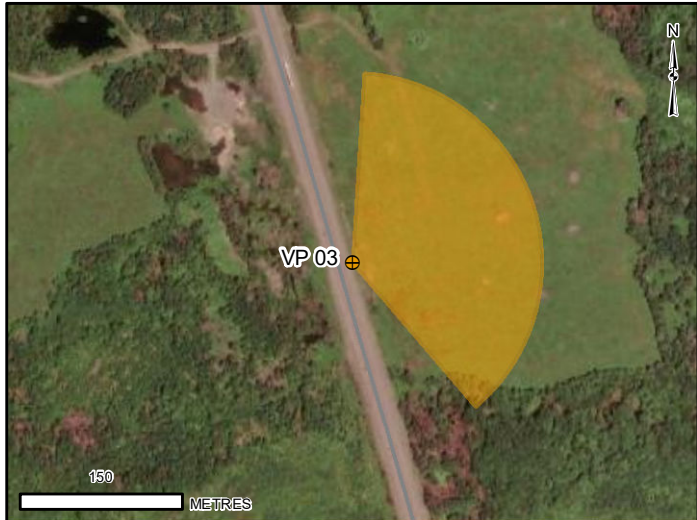
BASELINE PHOTO



NOTE
SOME TURBINES MIGHT BE (PARTIALLY) OBSCURED BY VEGETATION IN CLOSE PROXIMITY TO THE VIEWPOINT.

TURBINES SHOWN ARE A REPRESENTATION OF THE GOLDWIND 182-8.0 MW.
HUB HEIGHT: 120 M
ROTOR DIAMETER: 183.4 M
TIP HEIGHT: 211.7 M

VIEWPOINT LOCATION DETAIL



- LEGEND**
- TURBINE LOCATION
 - CURRENT VIEWPOINT
 - VIEWPOINT
 - CURRENT VIEWPOINT FIELD OF VIEW
 - OTHER VIEWPOINT FIELD OF VIEW
 - HIGHWAY
 - LOCAL ROAD
 - WATERCOURSE
 - WATERBODY

VIEWPOINT INFORMATION	
VIEWPOINT NUMBER:	VP-03
EASTING:	457703 m
NORTHING:	5039986 m
ELEVATION:	229 m
DATE:	18 DECEMBER 2023
WEATHER CONDITIONS:	OVERCAST
DIRECTION:	EAST
FOCAL LENGTH:	50 mm
FIELD OF VIEW:	~135°
HEIGHT OF CAMERA ABOVE GROUND:	1.7 m

REFERENCES
DIGITAL BASE DATA OBTAINED FROM GEOGRATIS, © DEPARTMENT OF NATURAL RESOURCES CANADA. ALL RIGHTS RESERVED
DATUM: NAD83 PROJECTION: UTM ZONE 20

CLIENT
EVERWIND FUELS (EWF)

PROJECT
WINDY RIDGE & KMTNUK WIND PROJECTS

TITLE
VISUAL SIMULATION VIEWPOINT 03 - FOLLY MOUNTAIN -
REVISED LAYOUT (2025)

	CONSULTANT	YYYY-MM-DD	2025-05-23
	DESIGNED	PT	
	PREPARED	BS	
	REVIEWED	NLH	
	APPROVED	KG	

PROJECT NO.	CONTROL	REV.	FIGURE
CA0054245.2400	100	0	3B

VIEWPOINT SIMULATION



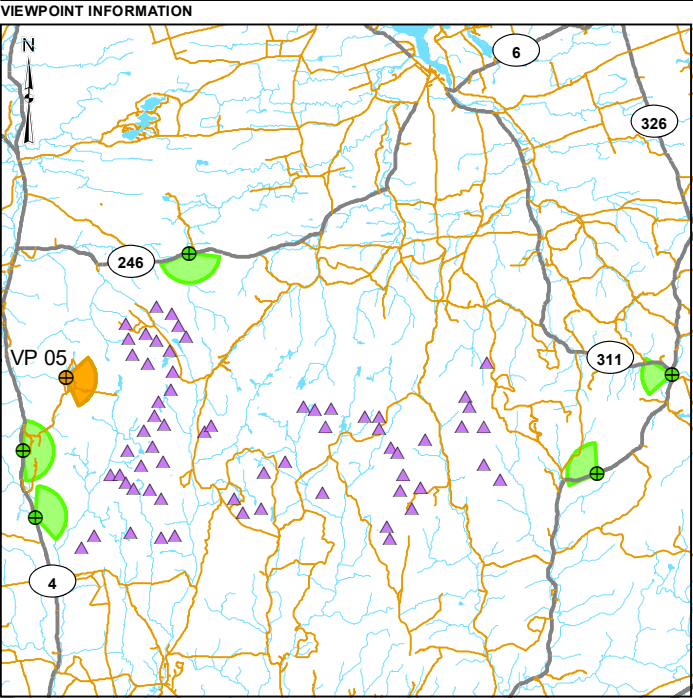
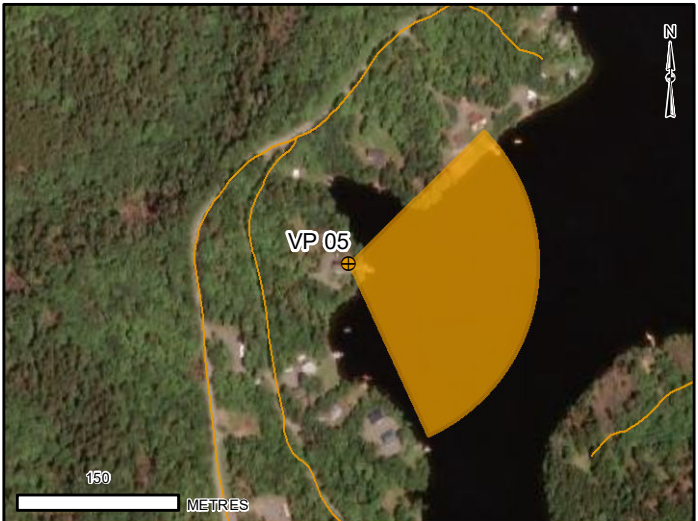
BASELINE PHOTO



NOTE
SOME TURBINES MIGHT BE (PARTIALLY) OBSCURED BY VEGETATION IN CLOSE PROXIMITY TO THE VIEWPOINT.

TURBINES SHOWN ARE A REPRESENTATION OF THE GOLDWIND 182-8.0 MW.
HUB HEIGHT: 120 M
ROTOR DIAMETER: 183.4 M
TIP HEIGHT: 211.7 M

VIEWPOINT LOCATION DETAIL



LEGEND			
	TURBINE LOCATION		HIGHWAY
	CURRENT VIEWPOINT		LOCAL ROAD
	VIEWPOINT		WATERCOURSE
	CURRENT VIEWPOINT FIELD OF VIEW		WATERBODY
	OTHER VIEWPOINT FIELD OF VIEW		

VIEWPOINT INFORMATION	
VIEWPOINT NUMBER:	VP-05
EASTING:	459213 m
NORTHING:	5046889 m
ELEVATION:	273 m
DATE:	15 DECEMBER 2023
WEATHER CONDITIONS:	OVERCAST (BLUE SKY DEPICTED)
DIRECTION:	EAST
FOCAL LENGTH:	50 mm
FIELD OF VIEW:	~110°
HEIGHT OF CAMERA ABOVE GROUND:	1.7 m

REFERENCES
DIGITAL BASE DATA OBTAINED FROM GEOGRATIS, © DEPARTMENT OF NATURAL RESOURCES CANADA. ALL RIGHTS RESERVED
DATUM: NAD83 PROJECTION: UTM ZONE 20

CLIENT
EVERWIND FUELS (EWF)

PROJECT
WINDY RIDGE & KMTNUK WIND PROJECTS

TITLE
VISUAL SIMULATION VIEWPOINT 05 - HART LAKE WEST - REVISED LAYOUT (2025)

CONSULTANT	YYYY-MM-DD	2025-05-23
	DESIGNED	PT
	PREPARED	BS
	REVIEWED	NLH
	APPROVED	KG



PROJECT NO.	CONTROL	REV.	FIGURE
CA0054245.2400	100	0	5A

VIEWPOINT SIMULATION



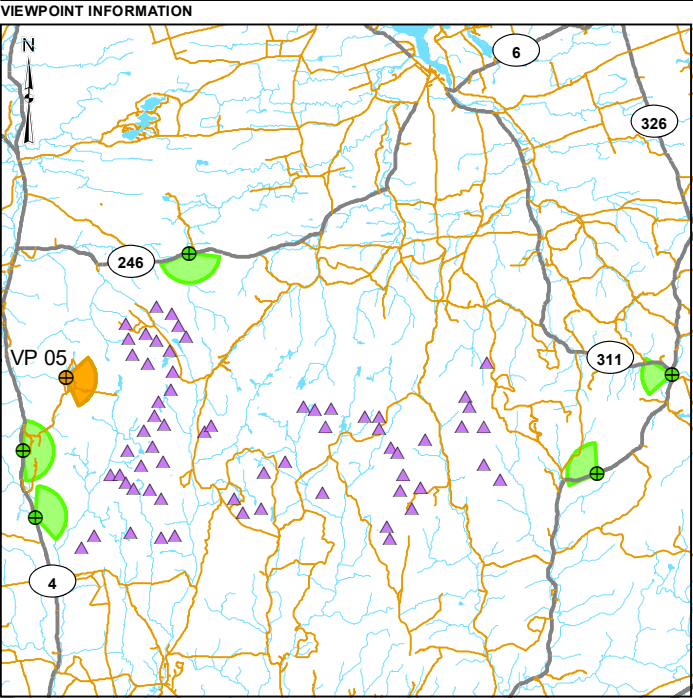
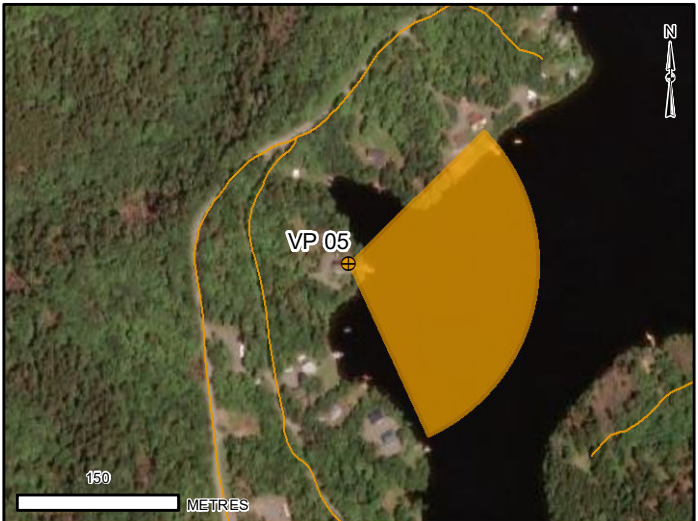
BASLINE PHOTO



NOTE
SOME TURBINES MIGHT BE (PARTIALLY) OBSCURED BY VEGETATION IN CLOSE PROXIMITY TO THE VIEWPOINT.

TURBINES SHOWN ARE A REPRESENTATION OF THE GOLDWIND 182-8.0 MW.
HUB HEIGHT: 120 M
ROTOR DIAMETER: 183.4 M
TIP HEIGHT: 211.7 M

VIEWPOINT LOCATION DETAIL



LEGEND			
	TURBINE LOCATION		HIGHWAY
	CURRENT VIEWPOINT		LOCAL ROAD
	VIEWPOINT		WATERCOURSE
	CURRENT VIEWPOINT FIELD OF VIEW		WATERBODY
	OTHER VIEWPOINT FIELD OF VIEW		

VIEWPOINT INFORMATION	
VIEWPOINT NUMBER:	VP-05
EASTING:	459213 m
NORTHING:	5046889 m
ELEVATION:	273 m
DATE:	15 DECEMBER 2023
WEATHER CONDITIONS:	OVERCAST
DIRECTION:	EAST
FOCAL LENGTH:	50 mm
FIELD OF VIEW:	~110°
HEIGHT OF CAMERA ABOVE GROUND:	1.7 m

REFERENCES
DIGITAL BASE DATA OBTAINED FROM GEOGRATIS, © DEPARTMENT OF NATURAL RESOURCES CANADA. ALL RIGHTS RESERVED
DATUM: NAD83 PROJECTION: UTM ZONE 20

CLIENT
EVERWIND FUELS (EWF)

PROJECT
WINDY RIDGE & KMTNUK WIND PROJECTS

TITLE
VISUAL SIMULATION VIEWPOINT 05 - HART LAKE WEST - REVISED LAYOUT (2025)

CONSULTANT	YYYY-MM-DD	2025-05-23
	DESIGNED	PT
	PREPARED	BS
	REVIEWED	NLH
	APPROVED	KG



PROJECT NO. CA0054245.2400	CONTROL 100	REV. 0	FIGURE 5B
-------------------------------	----------------	-----------	--------------