

VIEWPOINT SIMULATION



BASELINE PHOTO



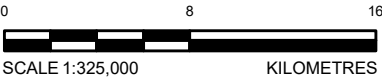
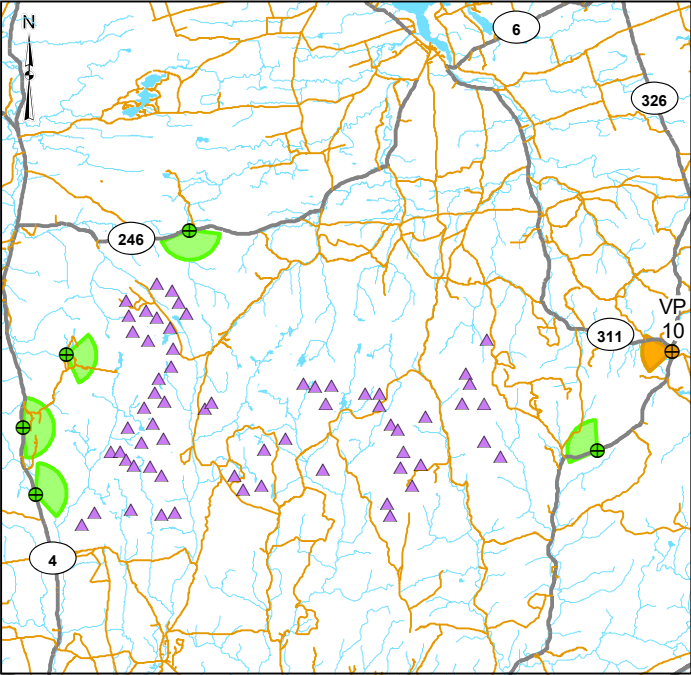
**NOTE**  
SOME TURBINES MIGHT BE (PARTIALLY) OBSCURED BY VEGETATION IN CLOSE PROXIMITY TO THE VIEWPOINT.

TURBINES SHOWN ARE A REPRESENTATION OF THE GOLDWIND 182-8.0 MW.  
HUB HEIGHT: 120 M  
ROTOR DIAMETER: 183.4 M  
TIP HEIGHT: 211.7 M

VIEWPOINT LOCATION DETAIL



VIEWPOINT INFORMATION



LEGEND

- TURBINE LOCATION
- CURRENT VIEWPOINT
- VIEWPOINT
- CURRENT VIEWPOINT FIELD OF VIEW
- OTHER VIEWPOINT FIELD OF VIEW
- HIGHWAY
- LOCAL ROAD
- WATERCOURSE
- WATERBODY

VIEWPOINT INFORMATION

VIEWPOINT NUMBER: VP-10  
EASTING: 489269 m  
NORTHING: 5047089 m  
ELEVATION: 138 m  
DATE: 12 MAY 2025  
WEATHER CONDITIONS: CLOUDY (BLUE SKY DEPICTED)  
DIRECTION: WEST  
FOCAL LENGTH: 50 mm  
FIELD OF VIEW: ~75°  
HEIGHT OF CAMERA ABOVE GROUND: 1.7 m

REFERENCES

DIGITAL BASE DATA OBTAINED FROM GEOGRATIS, © DEPARTMENT OF NATURAL RESOURCES CANADA. ALL RIGHTS RESERVED  
DATUM: NAD83 PROJECTION: UTM ZONE 20

CLIENT

EVERWIND FUELS (EWF)

PROJECT

WINDY RIDGE & KMTNUK WIND PROJECTS

TITLE

**VISUAL SIMULATION VIEWPOINT 10 - EARLTOWN - REVISED LAYOUT (2025)**

CONSULTANT

YYYY-MM-DD 2025-05-23  
DESIGNED PT  
PREPARED BS  
REVIEWED NLH  
APPROVED KG



PROJECT NO.  
CA0054245.2400

CONTROL  
100

REV.  
0

FIGURE  
10A



VIEWPOINT SIMULATION



BASELINE PHOTO



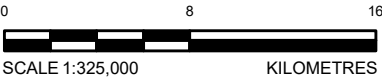
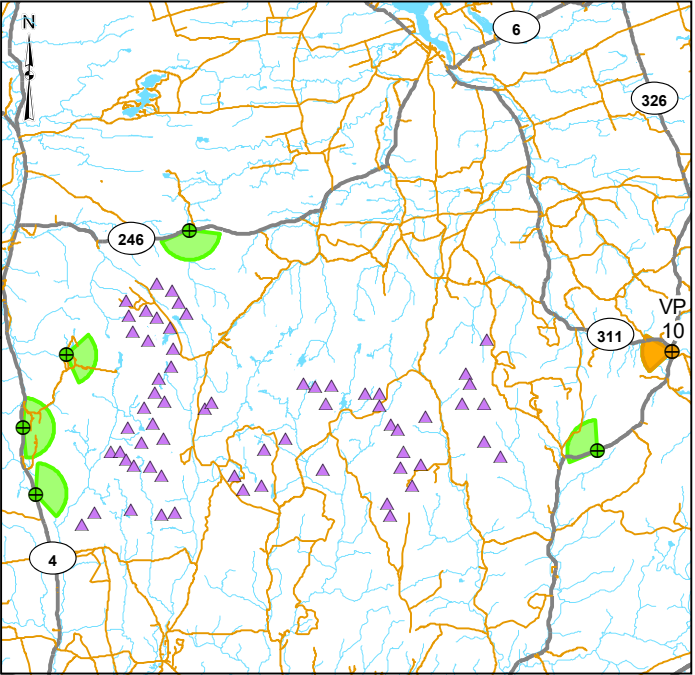
**NOTE**  
SOME TURBINES MIGHT BE (PARTIALLY) OBSCURED BY VEGETATION IN CLOSE PROXIMITY TO THE VIEWPOINT.

TURBINES SHOWN ARE A REPRESENTATION OF THE GOLDWIND 182-8.0 MW.  
HUB HEIGHT: 120 M  
ROTOR DIAMETER: 183.4 M  
TIP HEIGHT: 211.7 M

VIEWPOINT LOCATION DETAIL



VIEWPOINT INFORMATION



LEGEND

- TURBINE LOCATION
- CURRENT VIEWPOINT
- VIEWPOINT
- CURRENT VIEWPOINT FIELD OF VIEW
- OTHER VIEWPOINT FIELD OF VIEW
- HIGHWAY
- LOCAL ROAD
- WATERCOURSE
- WATERBODY

VIEWPOINT INFORMATION

VIEWPOINT NUMBER:	VP-10
EASTING:	489269 m
NORTHING:	5047089 m
ELEVATION:	138 m
DATE:	12 MAY 2025
WEATHER CONDITIONS:	CLOUDY
DIRECTION:	WEST
FOCAL LENGTH:	50 mm
FIELD OF VIEW:	~75°
HEIGHT OF CAMERA ABOVE GROUND:	1.7 m

REFERENCES

DIGITAL BASE DATA OBTAINED FROM GEOGRATIS, © DEPARTMENT OF NATURAL RESOURCES CANADA. ALL RIGHTS RESERVED  
DATUM: NAD83 PROJECTION: UTM ZONE 20

CLIENT  
EVERWIND FUELS (EWF)

PROJECT  
WINDY RIDGE & KMTNUK WIND PROJECTS

TITLE  
VISUAL SIMULATION VIEWPOINT 10 - EARLTOWN - REVISED LAYOUT (2025)

CONSULTANT	YYYY-MM-DD	2025-05-23
	DESIGNED	PT
	PREPARED	BS
	REVIEWED	NLH
	APPROVED	KG



PROJECT NO.	CONTROL	REV.	FIGURE
CA0054245.2400	100	0	10B



VIEWPOINT SIMULATION



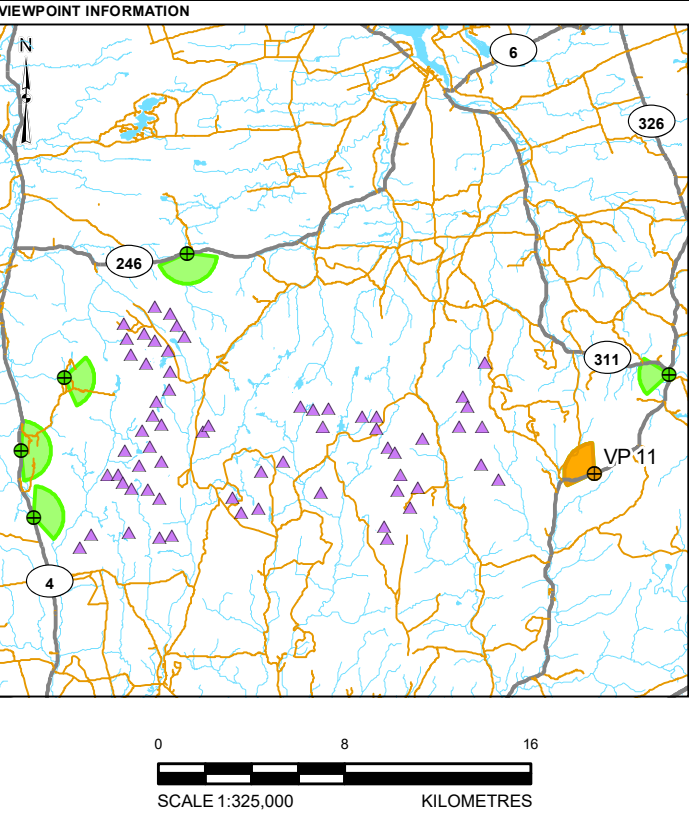
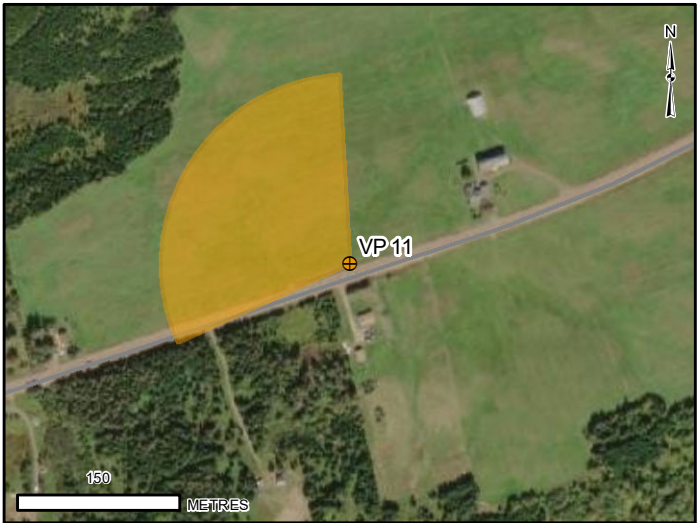
BASELINE PHOTO



**NOTE**  
SOME TURBINES MIGHT BE (PARTIALLY) OBSCURED BY VEGETATION IN CLOSE PROXIMITY TO THE VIEWPOINT.

TURBINES SHOWN ARE A REPRESENTATION OF THE GOLDWIND 182-8.0 MW.  
HUB HEIGHT: 120 M  
ROTOR DIAMETER: 183.4 M  
TIP HEIGHT: 211.7 M

VIEWPOINT LOCATION DETAIL



LEGEND			
	TURBINE LOCATION		HIGHWAY
	CURRENT VIEWPOINT		LOCAL ROAD
	VIEWPOINT		WATERCOURSE
	CURRENT VIEWPOINT FIELD OF VIEW		WATERBODY
	OTHER VIEWPOINT FIELD OF VIEW		

VIEWPOINT INFORMATION	
VIEWPOINT NUMBER:	VP-11
EASTING:	485570 m
NORTHING:	5042164 m
ELEVATION:	228 m
DATE:	12 MAY 2025
WEATHER CONDITIONS:	CLOUDY (BLUE SKY DEPICTED)
DIRECTION:	WEST
FOCAL LENGTH:	50 mm
FIELD OF VIEW:	~110°
HEIGHT OF CAMERA ABOVE GROUND:	1.7 m

**REFERENCES**  
DIGITAL BASE DATA OBTAINED FROM GEOGRATIS, © DEPARTMENT OF NATURAL RESOURCES CANADA. ALL RIGHTS RESERVED  
DATUM: NAD83 PROJECTION: UTM ZONE 20

CLIENT  
EVERWIND FUELS (EWF)

PROJECT  
WINDY RIDGE & KMTNUK WIND PROJECTS

TITLE  
**VISUAL SIMULATION VIEWPOINT 11 - NUTTBY MOUNTAIN  
RIDGE HIGHWAY 311 - REVISED LAYOUT (2025)**

CONSULTANT	YYYY-MM-DD	2025-05-23
DESIGNED	PT	
PREPARED	BS	
REVIEWED	NLH	
APPROVED	KG	

PROJECT NO. CA0054245.2400	CONTROL 100	REV. 0	FIGURE 11A
-------------------------------	----------------	-----------	---------------



VIEWPOINT SIMULATION



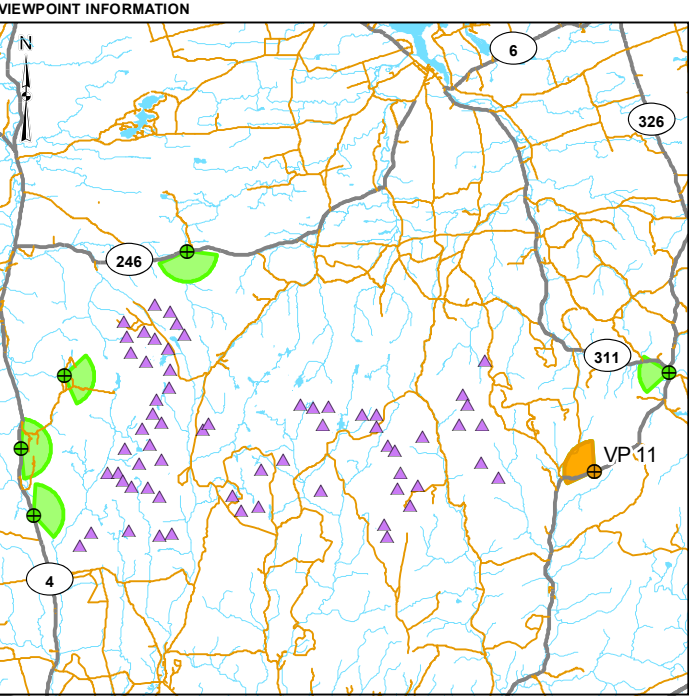
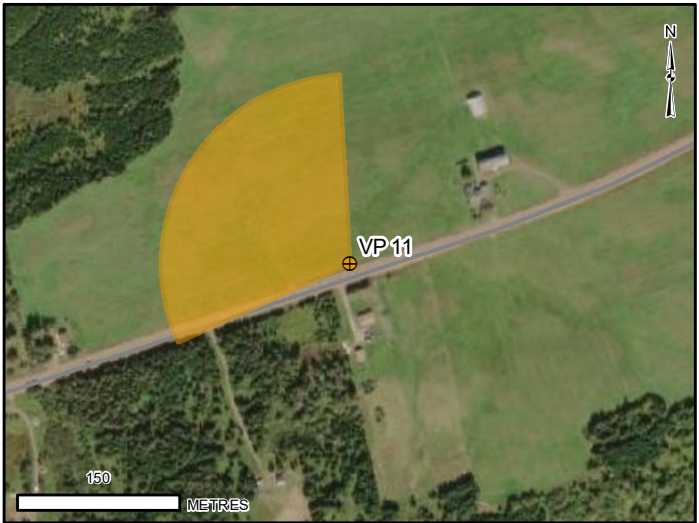
BASELINE PHOTO



**NOTE**  
SOME TURBINES MIGHT BE (PARTIALLY) OBSCURED BY VEGETATION IN CLOSE PROXIMITY TO THE VIEWPOINT.

TURBINES SHOWN ARE A REPRESENTATION OF THE GOLDWIND 182-8.0 MW.  
HUB HEIGHT: 120 M  
ROTOR DIAMETER: 183.4 M  
TIP HEIGHT: 211.7 M

VIEWPOINT LOCATION DETAIL



LEGEND			
	TURBINE LOCATION		HIGHWAY
	CURRENT VIEWPOINT		LOCAL ROAD
	VIEWPOINT		WATERCOURSE
	CURRENT VIEWPOINT FIELD OF VIEW		WATERBODY
	OTHER VIEWPOINT FIELD OF VIEW		

VIEWPOINT INFORMATION	
VIEWPOINT NUMBER:	VP-11
EASTING:	485570 m
NORTHING:	5042164 m
ELEVATION:	226 m
DATE:	12 MAY 2025
WEATHER CONDITIONS:	CLOUDY
DIRECTION:	WEST
FOCAL LENGTH:	50 mm
FIELD OF VIEW:	~110°
HEIGHT OF CAMERA ABOVE GROUND:	1.7 m

**REFERENCES**  
DIGITAL BASE DATA OBTAINED FROM GEOGRATIS, © DEPARTMENT OF NATURAL RESOURCES CANADA. ALL RIGHTS RESERVED  
DATUM: NAD83 PROJECTION: UTM ZONE 20

CLIENT  
EVERWIND FUELS (EWF)

PROJECT  
WINDY RIDGE & KMTNUK WIND PROJECTS

TITLE  
**VISUAL SIMULATION VIEWPOINT 11 - NUTTBY MOUNTAIN RIDGE HIGHWAY 311 - REVISED LAYOUT (2025)**

CONSULTANT	YYYY-MM-DD	2025-05-23
DESIGNED	PT	
PREPARED	BS	
REVIEWED	NLH	
APPROVED	KG	

PROJECT NO.	CONTROL	REV.	FIGURE
CA0054245.2400	100	0	11B