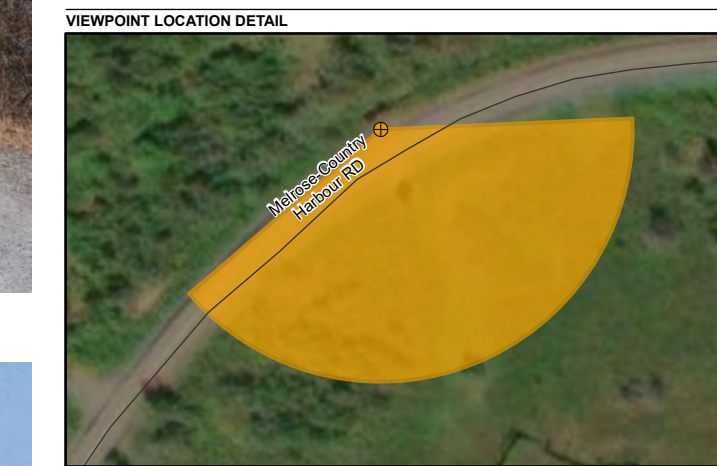
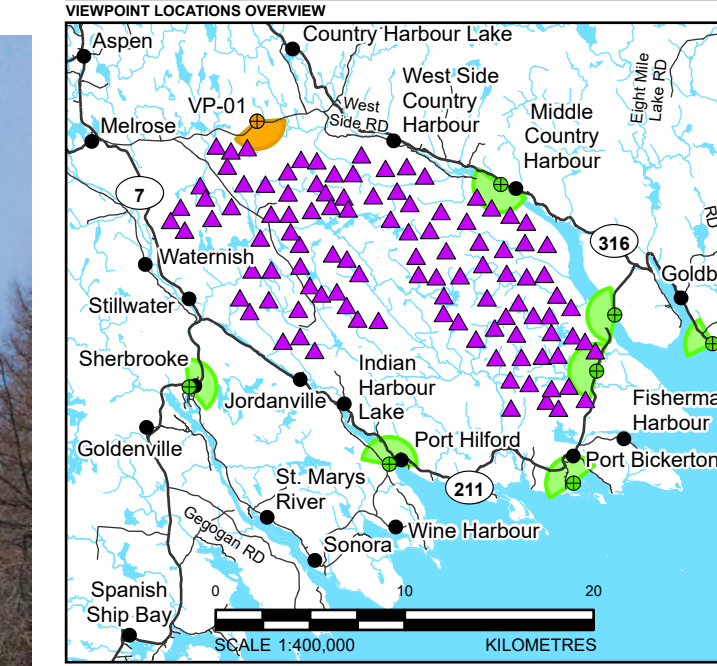


VIEWPOINT SIMULATION



BASELINE PHOTO



**LEGEND**

— HIGHWAY	● CURRENT VIEWPOINT
— LOCAL ROAD	● VIEWPOINT
▲ TURBINE LOCATION	■ CURRENT VIEWPOINT FIELD OF VIEW
	■ OTHER VIEWPOINT FIELD OF VIEW

**VIEWPOINT INFORMATION**

VIEWPOINT NUMBER:	VP-01	WEATHER:	REPRESENTED AS BLUE SKY
EASTING:	583444 m	DIRECTION:	SOUTH
NORTHING:	5013446 m	FOCAL LENGTH:	50mm
ELEVATION:	43 m	FIELD OF VIEW:	~140°
DATE:	12 APRIL 2026	CAMERA HEIGHT ABOVE GROUND:	1.7m

**NOTES AND REFERENCES**  
 SOME TURBINES MIGHT BE (PARTIALLY) OBTSCURED BY VEGETATION IN CLOSE PROXIMITY TO THE VIEWPOINT. TURBINES SHOWN ARE A REPRESENTATION OF THE GOLDWIND 162-8.0 MW. HUB HEIGHT: 130 M ROTOR DIAMETER: 163.4 M TIP HEIGHT: 221.7 M  
 DIGITAL BASE DATA OBTAINED FROM GEOGRATIS, © DEPARTMENT OF NATURAL RESOURCES CANADA. ALL RIGHTS RESERVED  
 DATUM: NAD83 PROJECTION: UTM ZONE 20

CLIENT  
**EVERWIND**  
 PROJECT  
**WIND FARM 3**

TITLE  
**VISUAL SIMULATION VIEWPOINT 01 - MELROSE COUNTRY HARBOUR ROAD**

CONSULTANT	WSP	DATE	2026-04-24
DESIGNED	PT	PREPARED	PT
REVIEWED	NLH	APPROVED	KG

PROJECT NO.	CONTROL	REV.	FIGURE
CA0066864.6287	3000	0	1

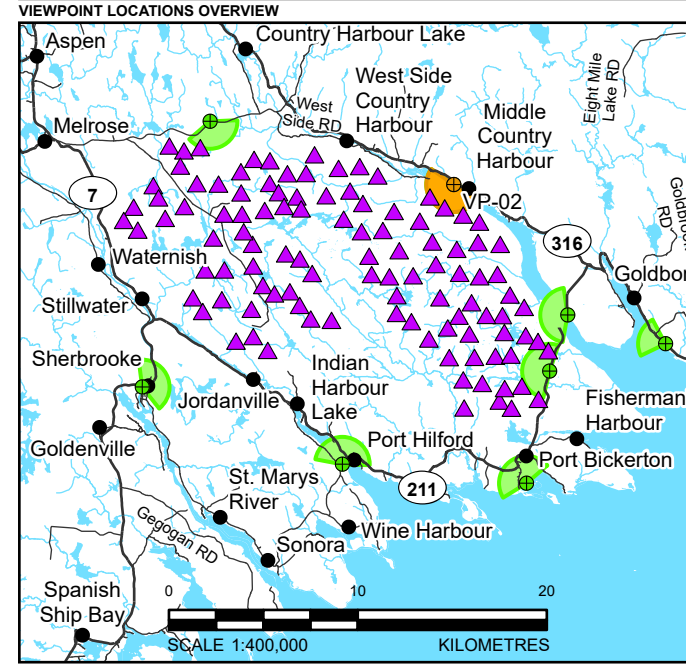
PATH: I:\CLIENTS\EVERWIND\CA0066864\_6287\_WINDFARM3\Visual\Harbour Road\VP\_01\_VP01\_Melrose\_Country\_Harbour\_Road.apr PRINTED ON: 04/23/2026 10:28:04 AM

20mm IF THIS REGISTRATION DOES NOT MATCH WHAT IS SHOWN, THE SHEET SIZE HAS BEEN ADJUSTED FROM A3/B3

VIEWPOINT SIMULATION



BASELINE PHOTO



**LEGEND**

— HIGHWAY	● CURRENT VIEWPOINT
— LOCAL ROAD	○ VIEWPOINT
▲ TURBINE LOCATION	○ CURRENT VIEWPOINT FIELD OF VIEW
	○ OTHER VIEWPOINT FIELD OF VIEW

**VIEWPOINT INFORMATION**

VIEWPOINT NUMBER:	VP-02	WEATHER:	REPRESENTED AS BLUE SKY
EASTING:	596338 m	DIRECTION:	SOUTHWEST
NORTHING:	5010098 m	FOCAL LENGTH:	50mm
ELEVATION:	2 m	FIELD OF VIEW:	~185°
DATE:	12 APRIL 2026	CAMERA HEIGHT ABOVE GROUND:	1.7m

**NOTES AND REFERENCES**  
 SOME TURBINES MIGHT BE (PARTIALLY) OBTSCURED BY VEGETATION IN CLOSE PROXIMITY TO THE VIEWPOINT. TURBINES SHOWN ARE A REPRESENTATION OF THE GOLDWIND 182-8.0 MW. HUB HEIGHT: 130 M ROTOR DIAMETER: 183.4 M TIP HEIGHT: 221.7 M  
 DIGITAL BASE DATA OBTAINED FROM GEOGRATIS, © DEPARTMENT OF NATURAL RESOURCES CANADA. ALL RIGHTS RESERVED  
 DATUM: NAD83 PROJECTION: UTM ZONE 20

CLIENT  
 EVERWIND  
 PROJECT  
 WIND FARM 3

TITLE  
**VISUAL SIMULATION VIEWPOINT 02 - SALSAMAN PROVINCIAL PARK - MARINA**

CONSULTANT	YYYY-MM-DD	2026-04-24
	DESIGNED	PT
	PREPARED	PT
	REVIEWED	NLH
	APPROVED	KG

PROJECT NO.	CONTROL	REV.	FIGURE
CA0066864.6287	3000	0	2

PATH: I:\CLIENTS\EVERWIND\CA0066864\_6287\_WSP\Map\Visual\CA0066864\_6287\_VP02\_Salsman-Provincial-Park-Marina.dwg PRINTED ON: 04/12/2026 10:28:41 AM

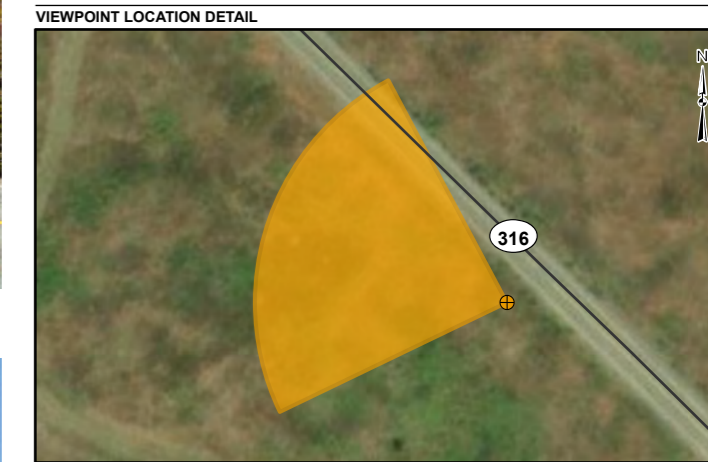
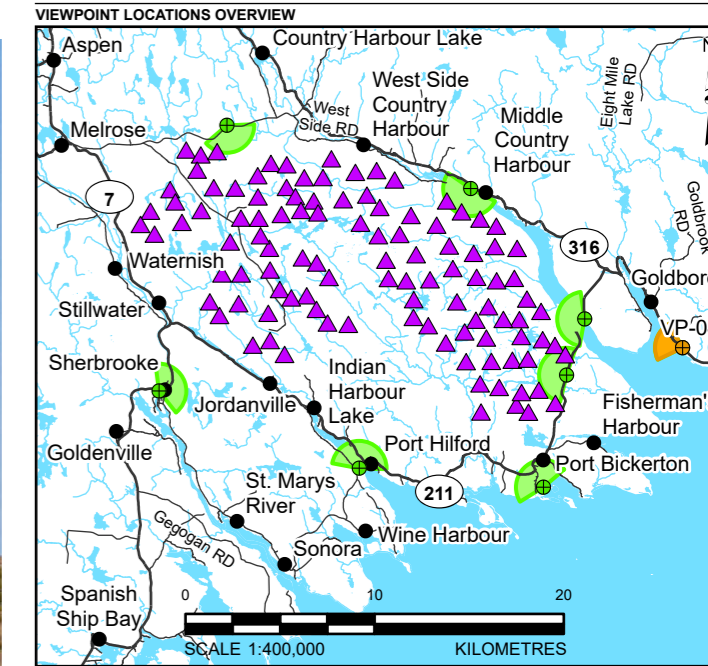
25mm 1" THIS REPRESENTATION DOES NOT IMPLY THAT EVERWIND IS SHOWING THE SHEET SIZE HAS BEEN DESCRIBED FROM THIS SHEET



VIEWPOINT SIMULATION



BASELINE PHOTO



**LEGEND**

— HIGHWAY	⊕ CURRENT VIEWPOINT
— LOCAL ROAD	⊙ VIEWPOINT
▲ TURBINE LOCATION	■ CURRENT VIEWPOINT FIELD OF VIEW
	■ OTHER VIEWPOINT FIELD OF VIEW

**VIEWPOINT INFORMATION**

VIEWPOINT NUMBER:	VP-04	WEATHER:	REPRESENTED AS BLUE SKY
EASTING:	607547 m	DIRECTION:	NORTHWEST
NORTHING:	5001676 m	FOCAL LENGTH:	50mm
ELEVATION:	30 m	FIELD OF VIEW:	~85°
DATE:	12 APRIL 2026	CAMERA HEIGHT ABOVE GROUND:	1.7m

**NOTES AND REFERENCES**

SOME TURBINES MIGHT BE (PARTIALLY) OBSCURED BY VEGETATION IN CLOSE PROXIMITY TO THE VIEWPOINT. TURBINES SHOWN ARE A REPRESENTATION OF THE GOLDWIND 182-8.0 MW. HUB HEIGHT: 130 M ROTOR DIAMETER: 183.4 M TIP HEIGHT: 221.7 M  
 DIGITAL BASE DATA OBTAINED FROM GEOGRATIS, © DEPARTMENT OF NATURAL RESOURCES CANADA. ALL RIGHTS RESERVED  
 DATUM: NAD83 PROJECTION: UTM ZONE 20

CLIENT  
**EVERWIND**  
 PROJECT  
**WIND FARM 3**

TITLE  
**VISUAL SIMULATION VIEWPOINT 04 - HIGHWAY 316**

CONSULTANT	YYYY-MM-DD	2026-04-24
	DESIGNED	PT
	PREPARED	PT
	REVIEWED	NLH
	APPROVED	KG

PROJECT NO.	CONTROL	REV.	FIGURE
CA0066864.6287	3000	0	4

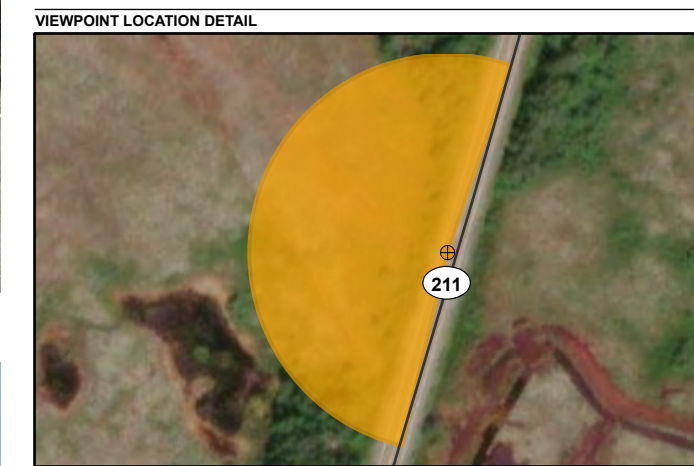
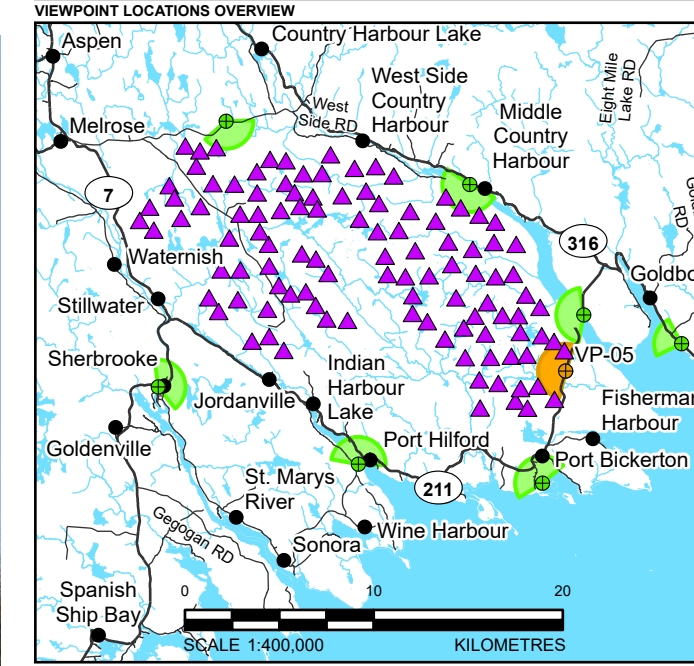
PATH: I:\CLIENTS\EVERWIND\CA0066864\_6287\_VP04\MapInfo\Visual\CA0066864\_6287\_VP04\_Highway316.aprx PRINTED ON: AT: 10:16:55 AM

IF THIS MEASUREMENT DOES NOT MATCH WHAT IS SHOWN, THE SHEET SIZE HAS BEEN MODIFIED FROM ANSIS B 26mm

VIEWPOINT SIMULATION



BASELINE PHOTO



**LEGEND**

— HIGHWAY	● CURRENT VIEWPOINT
— LOCAL ROAD	● VIEWPOINT
▲ TURBINE LOCATION	■ CURRENT VIEWPOINT FIELD OF VIEW
	■ OTHER VIEWPOINT FIELD OF VIEW

**VIEWPOINT INFORMATION**

VIEWPOINT NUMBER:	VP-05	WEATHER:	REPRESENTED AS BLUE SKY
EASTING:	601411 m	DIRECTION:	NORTHWEST
NORTHING:	5000228 m	FOCAL LENGTH:	50mm
ELEVATION:	46 m	FIELD OF VIEW:	~190°
DATE:	12 APRIL 2026	CAMERA HEIGHT ABOVE GROUND:	1.7m

**NOTES AND REFERENCES**  
 SOME TURBINES MIGHT BE (PARTIALLY) OBSCURED BY VEGETATION IN CLOSE PROXIMITY TO THE VIEWPOINT. TURBINES SHOWN ARE A REPRESENTATION OF THE GOLDWIND 182-8.0 MW. HUB HEIGHT: 130 M ROTOR DIAMETER: 183.4 M TIP HEIGHT: 221.7 M  
 DIGITAL BASE DATA OBTAINED FROM GEOGRATIS, © DEPARTMENT OF NATURAL RESOURCES CANADA. ALL RIGHTS RESERVED  
 DATUM: NAD83 PROJECTION: UTM ZONE 20

CLIENT  
**EVERWIND**

PROJECT  
**WIND FARM 3**

TITLE  
**VISUAL SIMULATION VIEWPOINT 05 - HIGHWAY 211**

CONSULTANT	YYYY-MM-DD	2026-04-24
DESIGNED	PT	
PREPARED	PT	
REVIEWED	NLH	
APPROVED	KG	

PROJECT NO.	CONTROL	REV.	FIGURE
CA0066864.6287	3000	0	5

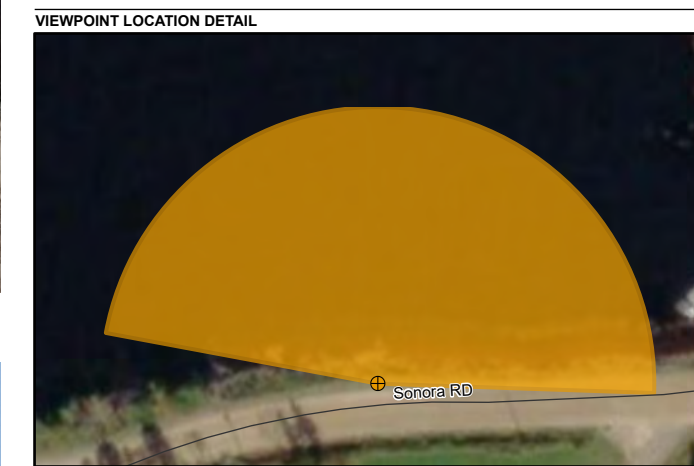
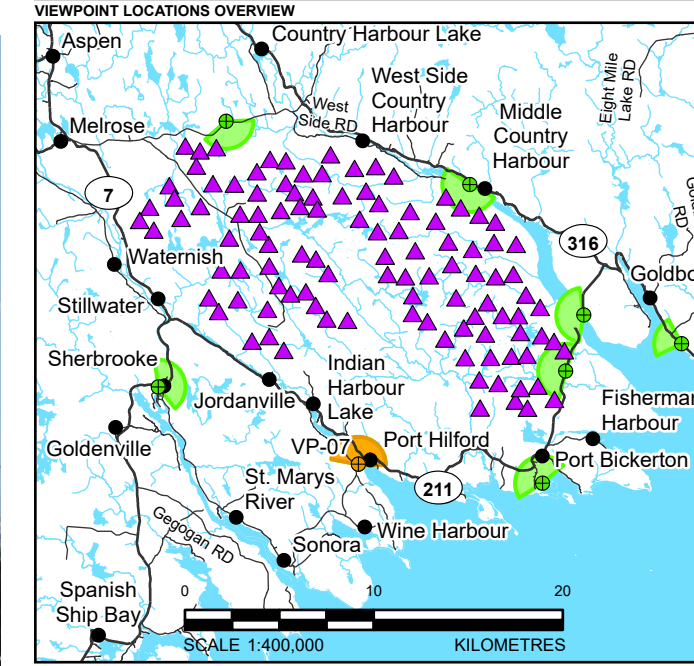
PATH: I:\CLIENTS\EVERWIND\CA0066864\_6287\_MRF3\Map\Visual\CA0066864\_6287\_VP05-Highway-211.mxd PRINTED ON: AT 10:22:28 AM  
 25mm 1"=100m (RENDERING DOES NOT MATCH WHAT IS SHOWN. THE SHEET SIZE HAS BEEN RESIZED FROM A4S8)



VIEWPOINT SIMULATION



BASELINE PHOTO



**LEGEND**

— HIGHWAY	● CURRENT VIEWPOINT
— LOCAL ROAD	● VIEWPOINT
▲ TURBINE LOCATION	● CURRENT VIEWPOINT FIELD OF VIEW
	● OTHER VIEWPOINT FIELD OF VIEW

**VIEWPOINT INFORMATION**

VIEWPOINT NUMBER:	VP-07	WEATHER:	REPRESENTED AS BLUE SKY
EASTING:	590443 m	DIRECTION:	NORTHEAST
NORTHING:	4995301 m	FOCAL LENGTH:	50mm
ELEVATION:	3 m	FIELD OF VIEW:	-170°
DATE:	12 APRIL 2026	CAMERA HEIGHT ABOVE GROUND:	1.7m

**NOTES AND REFERENCES**

SOME TURBINES MIGHT BE (PARTIALLY) OBTSCURED BY VEGETATION IN CLOSE PROXIMITY TO THE VIEWPOINT. TURBINES SHOWN ARE A REPRESENTATION OF THE GOLDWIND 182-8.0 MW. HUB HEIGHT: 130 M ROTOR DIAMETER: 183.4 M TIP HEIGHT: 221.7 M  
 DIGITAL BASE DATA OBTAINED FROM GEOGRATIS, © DEPARTMENT OF NATURAL RESOURCES CANADA. ALL RIGHTS RESERVED  
 DATUM: NAD83 PROJECTION: UTM ZONE 20

CLIENT  
**EVERWIND**

PROJECT  
**WIND FARM 3**

TITLE  
**VISUAL SIMULATION VIEWPOINT 07 - PORT HILFORD - SONORA ROAD**

CONSULTANT	YYYY-MM-DD	2026-04-24
DESIGNED	PT	
PREPARED	PT	
REVIEWED	NLH	
APPROVED	KG	

PROJECT NO.	CONTROL	REV.	FIGURE
CA0066864.6287	3000	0	7

PATH: I:\CLIENTS\EVERWIND\CA0066864\_6287\_VP07\VP07\Visual\CA0066864\_6287\_VP07-VP07-Hilford-Sonora-Road.apr PRINTED ON: AT 10:28:49 AM

25mm 1" THIS REPRESENTATION DOES NOT HAVE TO BE SHOWN. THE SHEET SIZE HAS BEEN INDICATED FROM FIGURE 0000

