



Memberton
WELCOMING THE WORLD



Welcome Pjila'si



Community Open House 2026

*Visual simulation of the proposed Wind Farm 3 Wind Project as part of the Guysborough Wind Projects

Land Acknowledgement

This project is located in Mi'kma'ki, the ancestral and unceded territory of the Mi'kmaq people, who have been the caretakers of this land since time immemorial and continue to be today.

The Guysborough Wind Projects are being developed in partnership with Mi'kmaq communities, with a shared commitment to Indigenous leadership, respect for rights and knowledge, and meaningful, long-term collaboration.

We also recognize African Nova Scotians as a distinct people whose histories, cultures, and contributions have shaped Nova Scotia for more than 400 years and continue to enrich communities across the province.

About the Membertou Led Indigenous Consortium



- Membertou Development Corporation is **leading a Mi'kmaq Nations consortium with equity ownership** in both Phase 1 and 2 wind projects.
- The projects follow an **Indigenous equity partner ownership model**, supporting **meaningful shared leadership and decision-making**.
- The partnership enables long-term **participation in both the development, construction and operation** of the projects.
- The consortium structure reflects a commitment to **economic reconciliation, local capacity building, and intergenerational benefits** for participating Mi'kmaq communities.



About EverWind

- EverWind is a **Canadian company** developing industrial energy and infrastructure projects across Atlantic Canada.
- Building on **existing marine and energy infrastructure** to deliver clean fuel solutions.
- Supplying **domestic and international markets** with large-scale, low-carbon energy.
- **Team of 100+ employees**, primarily from local communities, supported by technical partners.
- **Experienced developers, owners, and operators** of complex infrastructure projects across North America.
- Committed to **responsible development** grounded in environmental stewardship, Indigenous partnership, community engagement, and **long-term economic benefit**.



Point Tupper Energy Infrastructure Hub





ATLANTIC OCEAN

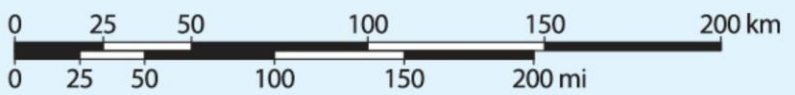


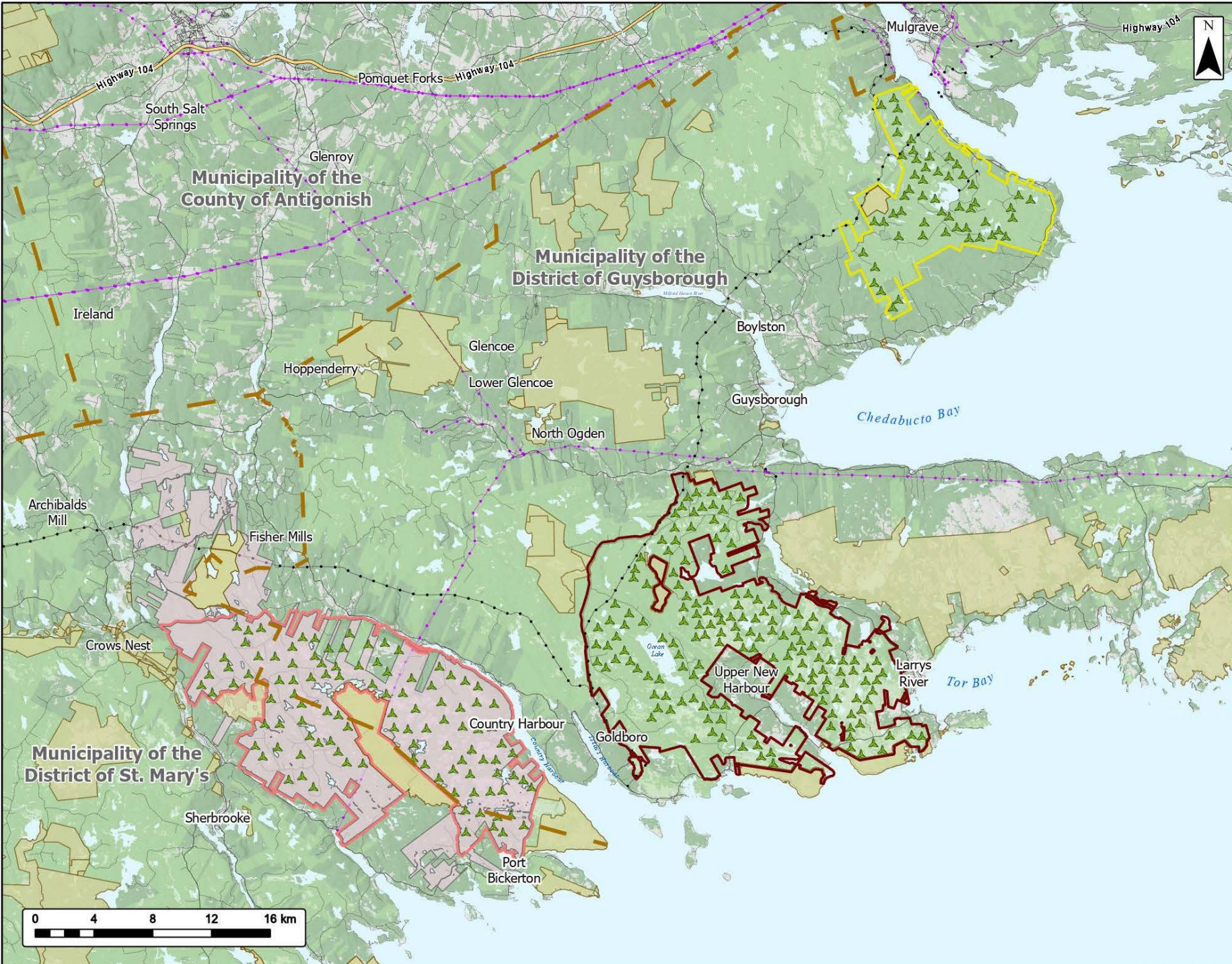
EVERWIND

Phase 1 Wind Projects 

Phase 2 Wind Projects 

Point Tupper 





Phase 2
Overview

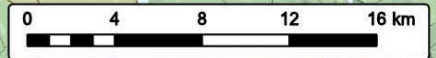


- Setapuktuk Wind Project (Wind Farm 1)
- Ocean Lake Wind Project (Wind Farm 2)
- Wind Farm 3
- Proposed Turbine Locations
- Crown Land
- Protected and Limited Use Lands
- Wind Farm 3 MOU Boundary
- Municipality Boundary
- Transportation**
- Trans-Canada Highway
- Highway
- Road
- Unpaved Road
- Utilities (Line)**
- Existing Pipeline
- Existing Transmission Lines
- Mapped Lakes and Rivers



Coordinate System: NAD 1983 CSRS UTM Zone 20N
 Sources: Esri, NASA, NGA, USGS, Service Nova Scotia, GeoNOVA, SNGIS, NSNPR, ACCDC, IBA Canada, CNWI, HERE, Garmin, USGS

Date: 2026-04-22	Project #: 25-12648
Scale: 1:250,000	Drawing #: 1
Drawn By: K. Wallace	1
Checked By: A. Doane	



Nine Mile Woods Wilderness Area

Cross Roads Country Harbour

Isaacs Harbour River Wilderness Area (Pending)

Wind Farm 3

Overview



Study Area

Assessment Area

Proposed Turbine Locations

Municipality Boundary

Existing Road to be Upgraded

Proposed New Road

Crown Land

Protected and Limited Use Lands

Transportation

Road

Unpaved Road

Utilities (Line)

Existing Pipeline

Existing Transmission Lines

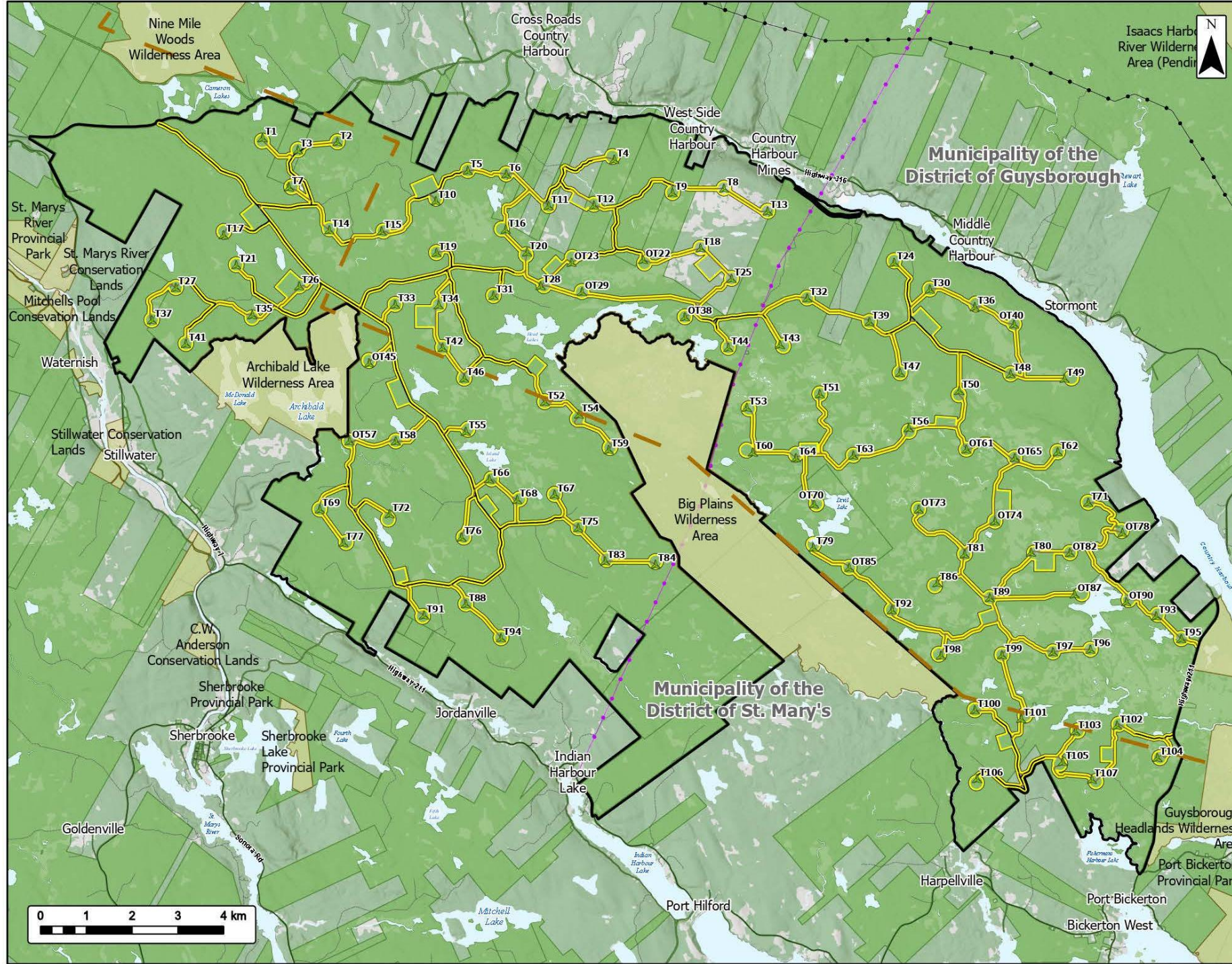
Water Features

Mapped Lakes and Rivers



Coordinate System: NAD 1983 UTM Zone 20N
Sources: Esri, NOAA, NOAA, USGS, Service Nova Scotia, GeoNova, SNGIS, NSNRR, ACCDC, IBA Canada, CWI, HERE, Garmin, USGS

Date:	2026-04-22	Project #:	25-12648
Scale:	1:80,000	Drawing #:	1
Drawn By:	K. Wallace		
Checked By:	A. Doane		

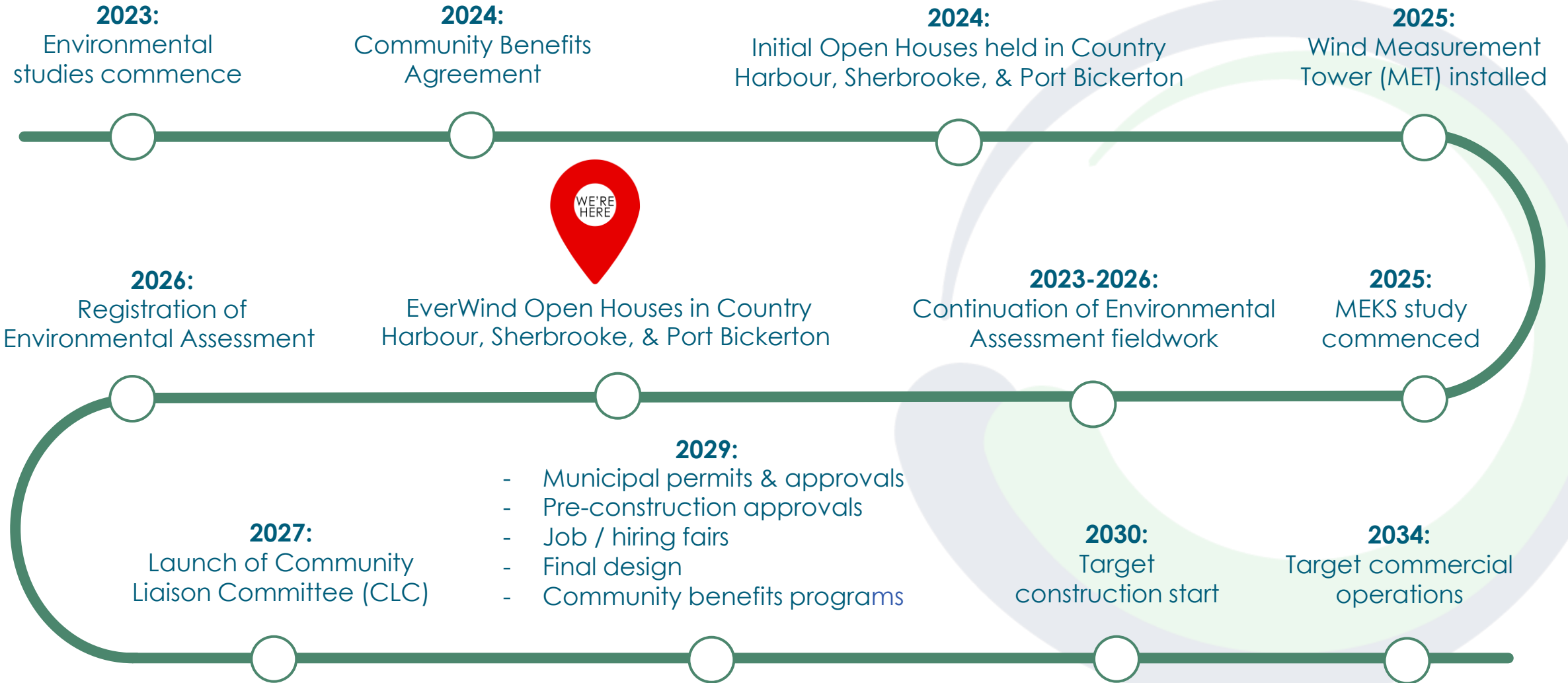


About the Wind Farm 3 Wind Project

The Wind Farm 3 wind project development was started by EverWind in 2023 as part of its Phase 2 wind portfolio. The proposed project is a result of over two years of community engagement, field studies, wind measurement, and engineering.

Project Capacity	Up to 856 MW
Ownership	Membertou-led Indigenous Consortium & EverWind
# Turbines	Up to 107 turbines
Turbine Model	Goldwind GWH182-8.0
Hub Height	130 m
Total Height	~221 m
Interconnection	Consortium-owned HV transmission line
Project Location	Municipality of the District of Guysborough and Municipality of the District of St. Mary's , near the communities of Country Harbour, Stormont, Port Bickerton, Port Hilford, Indian Harbour Lake, and Melrose.

Where We Are & Where We're Going



How a Wind Project is Sited

Choosing where to place wind turbines is a careful, multi-step process. No single factor decides where turbines go. It's about balancing technical, environmental, and community considerations.

When siting a wind project, the project team looks at:

- **Wind resource:** Areas with strong, consistent wind that can reliably generate electricity.
- **Land and terrain:** Land suitability, slope, soil conditions, and safe access for construction and maintenance.
- **Environmental studies:** Detailed studies to understand potential effects on wildlife, wetlands, watercourses, forests, and habitats, and how impacts can be avoided or reduced.
- **Setbacks and regulations:** Provincial and municipal requirements, including minimum distances from homes, roads, water bodies, and other features.
- **Cultural and archaeological considerations:** Studies and engagement to identify and protect areas of cultural, archaeological, or historical importance.
- **Community input:** Local knowledge, feedback, and concerns shared through open houses, engagement sessions, and future Community Liaison Committee discussions.

Siting decisions are refined over time as studies are completed, and community feedback is considered. The goal is to place turbines in locations that are safe, responsible, and respectful of the environment and nearby communities.

Environmental Assessment

Purpose

- An Environmental Assessment (EA) helps proponents plan projects to minimize environment impacts.

EA Registration Documents Include

- Information on the Project (location, phases of development, construction, schedule etc.).
- Indigenous and public engagement.
- Methods and results of baseline studies (desktop, field, predictive modelling etc.).
- Proposed mitigations.
- Significance of adverse effects on Valued Environmental Components (VECs).

Registration

- Public are notified of registration and have 40 days to submit comments.
- The EA is reviewed by a wide variety of provincial and federal departments.
- Regulators evaluate the design and plan of the Project through the EA process, to ensure environmental impacts are identified and managed before a project is constructed.
- Decision made by the Minister of Nova Scotia Environment and Climate Change.

Environmental Studies

- ✓ **Thousands of hours of studies**, completed by scientists, biologists, engineers and other technical experts.
- ✓ Informed by years of local community, regulatory and Indigenous engagement activities and feedback.
- ✓ Cumulative impacts are being considered.



Birds & Bats

- Breeding and migratory surveys, radar & acoustic monitoring, habitat surveys
- Targeted surveys for nightjars



Aquatic Environment

- Fish & fish habitat
- Wetland delineation and functional assessments



Terrestrial Wildlife

- Year-round surveys for terrestrial wildlife
- Targeted mainland moose and wood turtle surveys



Terrestrial Habitat

- Rare plant surveys
- Lichen surveys
- Old growth forest surveys
- Habitat assessments



Atmospheric Environment

- Greenhouse gas (GHG) assessment
- Noise modelling
- Shadow flicker modelling



Geophysical Environment

- Surficial and bedrock geology
- Groundwater



Heritage & Cultural

- Mi'kmaq Ecological Knowledge Study (MEKS)
- Archaeological Resource Impact Assessment (ARIA)

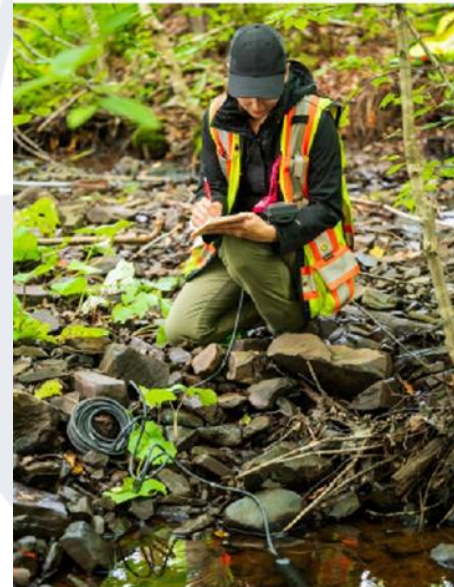
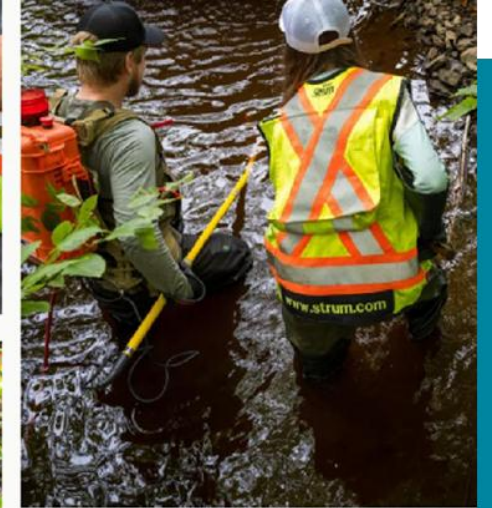


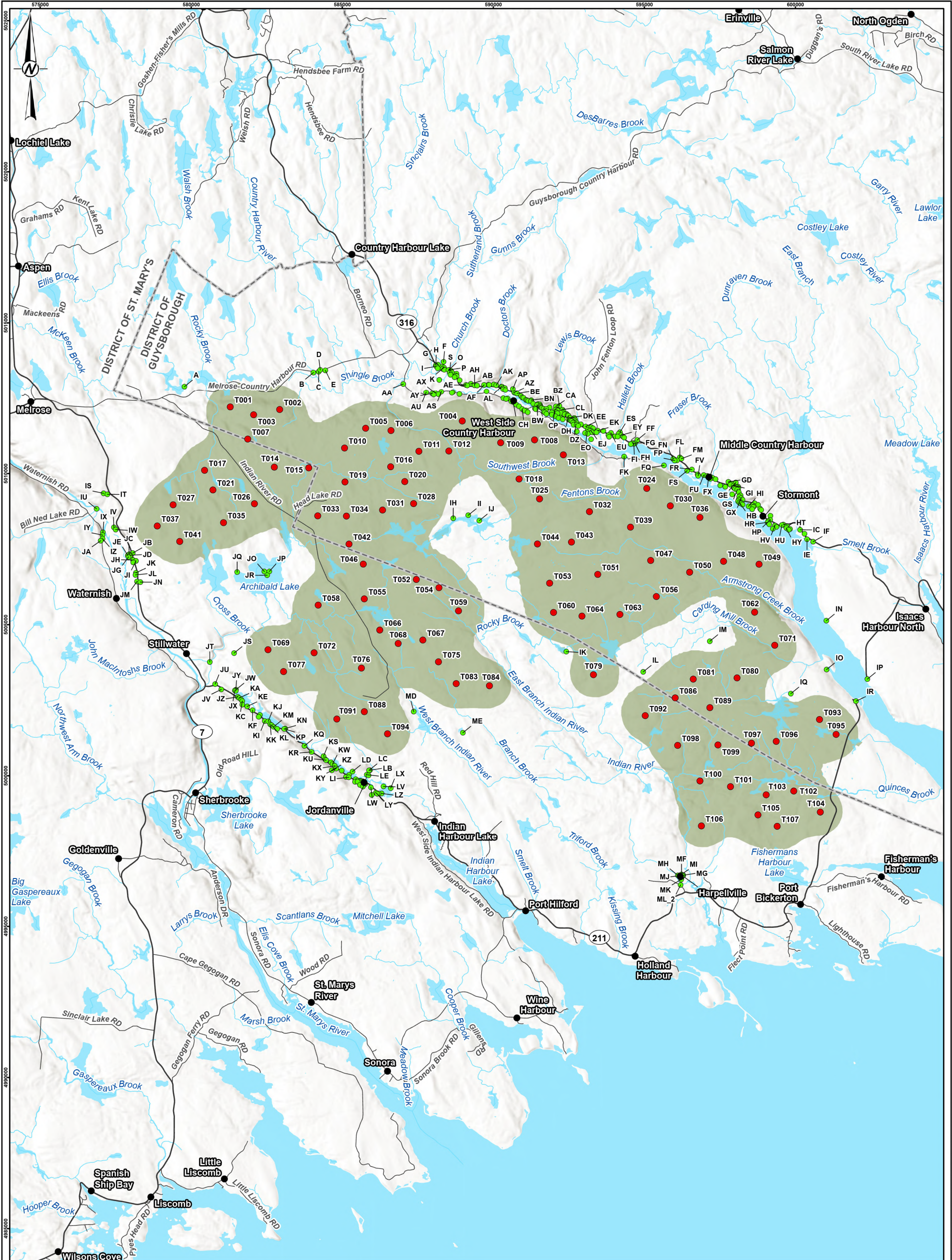
Social & Economic

- Desktop assessments for: local & provincial economy, land use & value, and recreation & tourism

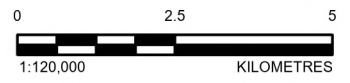
Environmental Monitoring

- Prior to certain project phases, the following plans will be developed, implemented, and submitted to Nova Scotia Environment and Climate Change:
 - Surface Water Management Plan
 - Erosion and Sediment Control Plan
 - Blasting Management Plan (if blasting is required)
 - Terrestrial Habitat and Wildlife Management Plan
 - Avian and Bat Monitoring Plan
 - Adaptive Management Plan
 - Complaints Resolution Plan
 - Mi'kmaq Communication Plan
 - Contingency Plan
- A second year of radar and acoustic monitoring for birds and bats will be completed prior to operations.
- Two years of monitoring for birds and bats will be completed during operations.
- Two years of monitoring for mainland moose is typically required during operations.
- A Traffic Management Plan will be developed.





- LEGEND**
- COMMUNITY
 - POTENTIAL RECEPTOR
 - TURBINE LOCATION
 - HIGHWAY
 - LOCAL ROAD
 - MUNICIPAL BOUNDARY
 - WATERCOURSE
 - WATERBODY
 - PREDICTED CUMULATIVE NOISE LEVEL**
 - CUMULATIVE NOISE LEVEL ≥ 40 dBA



REFERENCE(S)
 DIGITAL BASE DATA OBTAINED FROM GEOGRATIS, © DEPARTMENT OF NATURAL RESOURCES CANADA. ALL RIGHTS RESERVED.
 DATUM: NAD83 PROJECTION: UTM ZONE 20

CLIENT
EVERWIND FUELS (EWF)

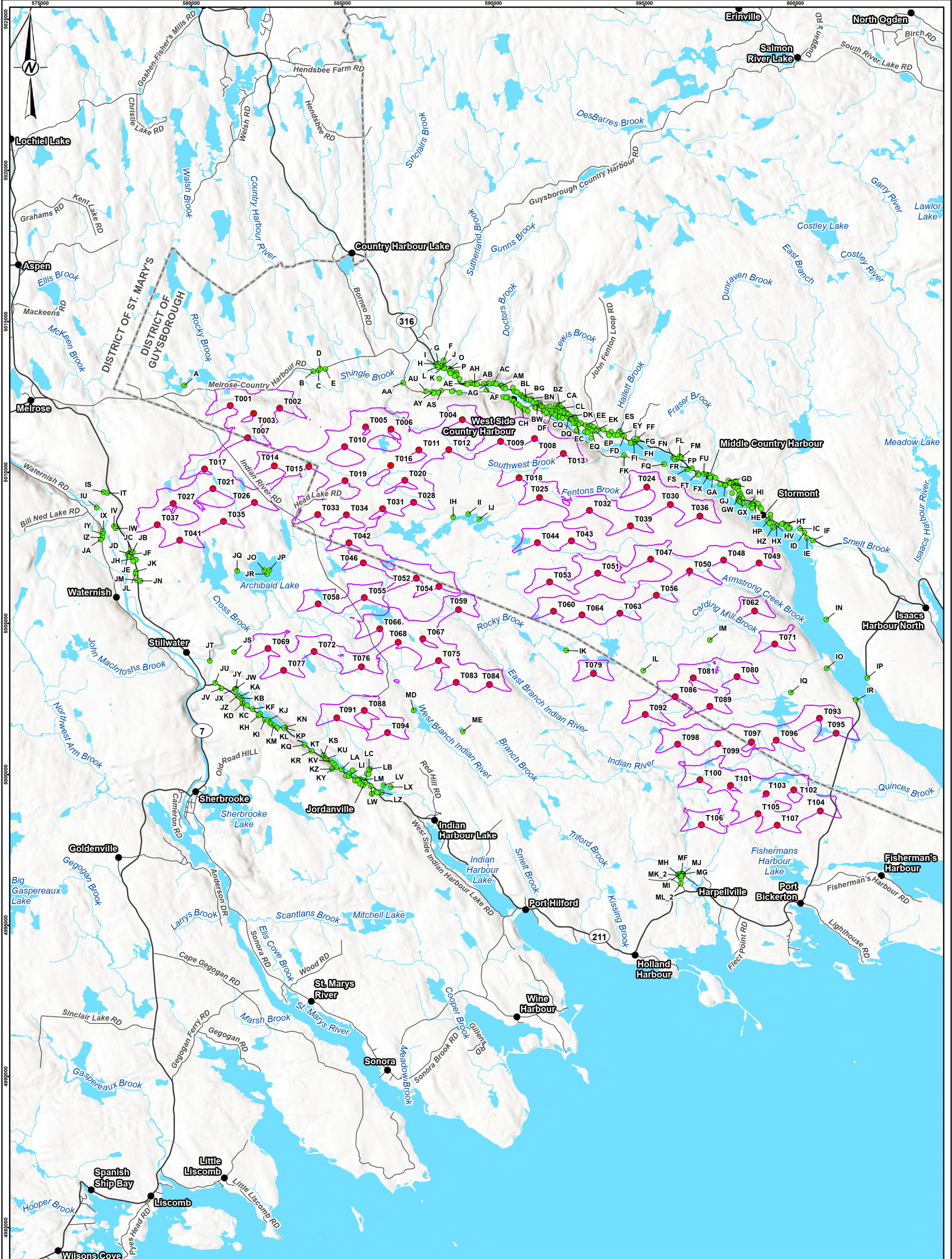
PROJECT
WIND FARM 3



CONSULTANT	YYYY-MM-DD	2026-04-23
DESIGNED		VY
PREPARED		MV PT
REVIEWED		VY
APPROVED		NLH

TITLE
CUMULATIVE NOISE LEVELS

PROJECT NO.	CONTROL	REV.	FIGURE
CA006864.6287		0	1



LEGEND

- COMMUNITY
- POTENTIAL RECEPTOR
- TURBINE LOCATION
- HIGHWAY
- LOCAL ROAD
- MUNICIPAL BOUNDARY
- WATERCOURSE
- WATERBODY
- PREDICTED SHADOW FLICKER (ADJUSTED-CASE)
- 30 HOURS PER YEAR

CLIENT
EVERWIND FUELS (EWF)

CONSULTANT
wsp

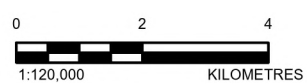
YYYY-MM-DD	2026-04-23
DESIGNED	VY
PREPARED	MV PT
REVIEWED	VY
APPROVED	NLH

REFERENCE(S)
DIGITAL BASE DATA OBTAINED FROM GEOGRATIS, © DEPARTMENT OF NATURAL RESOURCES CANADA. ALL RIGHTS RESERVED.
DATUM: NAD83 PROJECTION: UTM ZONE 20

PROJECT
WIND FARM 3

TITLE
SHADOW FLICKER LEVELS

PROJECT NO.	CONTROL	REV.	FIGURE
CA006864.6287		0	2



IF THIS MEASUREMENT DOES NOT MATCH WHAT IS SHOWN, THE SHEET SIZE HAS BEEN MODIFIED FROM A1S1B

Local Benefits: Direct, Indirect & Induced

- We believe our projects are net positives for the local communities in which we work.
- Benefits include:
 - **Billion-dollar Investment** in the Municipality of the District of Guysborough and Municipality of the District of St. Mary's.
 - Contracting opportunities for **Indigenous & local businesses**.
 - **Community Benefits Funds** paid out annually directly to the community through a combination of Proximity Payments, Vibrancy Fund and Bursaries.
 - Increased **local spending** on goods and services during the project's development, construction and operational phases.
 - Millions in project lifetime paid to the municipality.

Annual Municipal Tax

~\$7.4 million per year*

Project Life Municipal Tax

~\$308 million*

Wind development creates lasting economic spin-offs, supports local services, and delivers **stable, long-term revenue** to local municipalities.

Significant Job Creation



350-450 of Direct Jobs During Construction:

- ✓ **Civil installation:** land clearing, road construction, forming, concrete supply, grouting
- ✓ **Electrical installation:** overground installation, electrical testing, instrument installation
- ✓ **Turbine installation:** crane supply, turbine offload, mechanical and electrical work
- ✓ **Local businesses:** benefits from increased local spending with larger local workforce

~30-40 Part-Time and Full-Time Jobs during Operations and Maintenance:

- ✓ HV Technicians / Electricians
- ✓ Wind Technicians
- ✓ Road Maintenance Workers
- ✓ Vegetation Management Service Providers
- ✓ Snow & Surface Removal
- ✓ Administrative Support
- ✓ Inventory / Materials Management

Pre-construction activities to start in 2029/2030. A job fair will be held prior to start of construction. On-the-job training will be available.

Community Liaison Committee (CLC)

EverWind is committed to open communication and long-term collaboration with the communities where the project is being developed. As part of that commitment, a Community Liaison Committee (CLC) will be established for the project.

The CLC is a volunteer group made up of people from across the region, including local residents, landowners, municipal representatives, and members of community organizations. Members are selected through a public call for interest.

The CLC provides a way for community members and the project team to connect regularly and share information. Its role includes:

- Supporting ongoing communication throughout project development, construction, and operations.
- Providing a space to share local questions, concerns, and ideas.
- Offering input on potential project impacts and how they can be managed.
- Helping inform community benefit programs and local priorities.

If you are interested in learning more or getting involved in the CLC, please email info@guysboroughwind.com

Community Benefits Agreement

The Community Benefits Agreement includes a range of initiatives designed to deliver direct, long-term value to local communities, including the following:

Community Vibrancy Fund



Annual community benefits fund earmarked for community organisations

Proximity Payment



Direct payments to homeowners within a specified distance

Bursary Fund



Funds for education and training in the renewables industry, including supporting placements in the Wind Turbine Tech Program at NSCC

Other Benefits

- ✓ Local job fairs
- ✓ Contracting for Indigenous and local businesses
- ✓ Increased local spending

EverWind commits to \$1,000 per MW to Community Benefit Funds: >\$800 thousand annually*


Decommissioning

Repowering:

- Global trends favour **repowering** due to renewable wind resources
- Technological advances enable **efficient turbine replacements**

Decommissioning

- **All steel** is recyclable
- **>90%** of wind turbine is recyclable today!
- **Emerging technology** for turbine blade recycling
- **Dismantling** and **removal** of the turbines and all other equipment
- Removal of the turbine **foundations** down to 1m below grade
- **Reclamation** of the land



EverWind will provide a decommissioning plan to ensure funds are available to remove project facilities at end of project life

Help Us Choose a New Name for Wind Farm 3!

We're looking for a name that reflects the place, the people, and what matters most to the community. This project will grow alongside the community and bring renewable energy, local jobs, and long-term benefits. Below are a few name ideas shared by local students and community members. **Please place a sticker on or near the name you like best.**

Fishers Wind Project

Named to reflect the area's strong heritage and long connection to fishing in the ocean, lakes & rivers

Harbour Hills Wind Project

Inspired by the region's rolling hills and nearby coastal harbours that shape the local landscape

Big Plains Wind Project

Reflects the broad open landscapes and expansive upland terrain that define the character of the area

Napu'saqnuk Wind Project

The Mi'kmaq name for St. Mary's River. It was an essential waterway for the Mi'kmaq to travel, fish, hunt & live.

Thank you all / Wela'lioq

We appreciate you taking the time to join us!

Please fill out a feedback form

Visit our website to stay up-to-date on the project
guysboroughwind.com

Have a follow up question? Email us at **info@guysboroughwind.com**

You can also visit us during our office hours on Tuesdays & Wednesdays from
10 a.m. - 4 p.m. located in the Mall (9996 Highway 16, Guysborough)